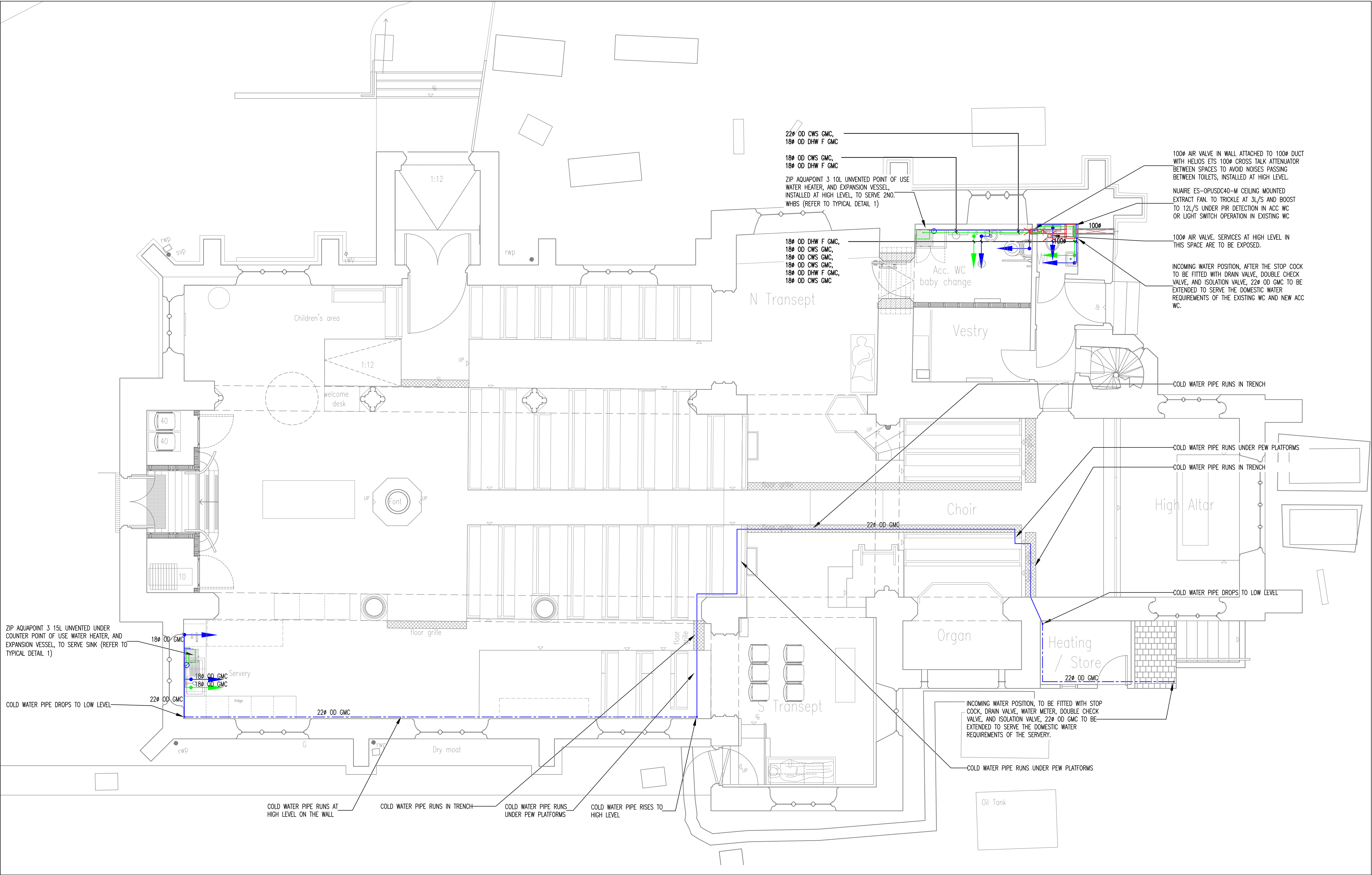


Date of Issue

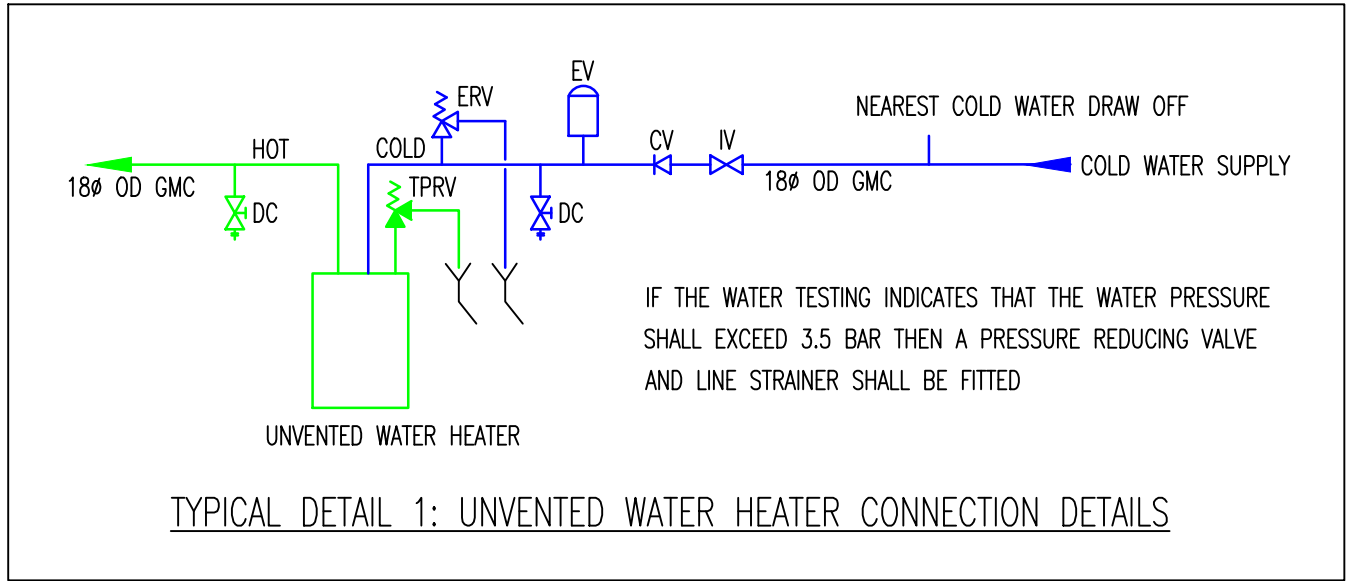
DD	16							
MM	9							
YY	25							

[illegible]



- NOTES
1. SCALED INSTALLATION DIMENSIONS MUST NOT BE TAKEN FROM THIS DRAWING.
 2. THIS DRAWING MUST BE READ IN CONJUNCTION WITH ALL RELEVANT DRAWINGS, DOCUMENTS AND INFORMATION PREPARED BY THE ARCHITECT AND OTHER CONSULTANTS.
 3. ANY DISCREPANCY ON THIS DRAWING MUST BE REFERRED TO THE SUPERVISING OFFICER AND CLARIFICATION OBTAINED BEFORE COMMENCEMENT OF WORK.
 4. REFER TO ARCHITECT'S DRAWINGS AND SPECIFICATION FOR DRAINAGE REQUIREMENTS.
 5. ISOLATION VALVES TO BE INCLUDED BEFORE CONNECTIONS TO SANITARY WARE OR APPLIANCES.

- LEGEND
- HOT WATER PIPEWORK AT LOW LEVEL
 - COLD WATER PIPEWORK AT LOW LEVEL
 - COLD WATER PIPEWORK AT HIGH LEVEL
 - UNVENTED WATER HEATER (WITH EXPANSION VESSEL)
 - CROSS TALK ATTENUATOR
 - CEILING MOUNTED EXTRACT FAN
 - EXTRACT AIR VALVE
 - OD OUTSIDE DIAMETER
 - CWS COLD WATER SERVICES
 - DHW F DOMESTIC HOT WATER FLOW
 - GMC GEBERIT MAPRESS COPPER
 - DC DRAIN COCK
 - EV EXPANSION VESSEL
 - TPRV TEMPERATURE & PRESSURE RELIEF VALVE
 - ERV EXPANSION RELIEF VALVE
 - CV CHECK VALVE
 - IV ISOLATION VALVE

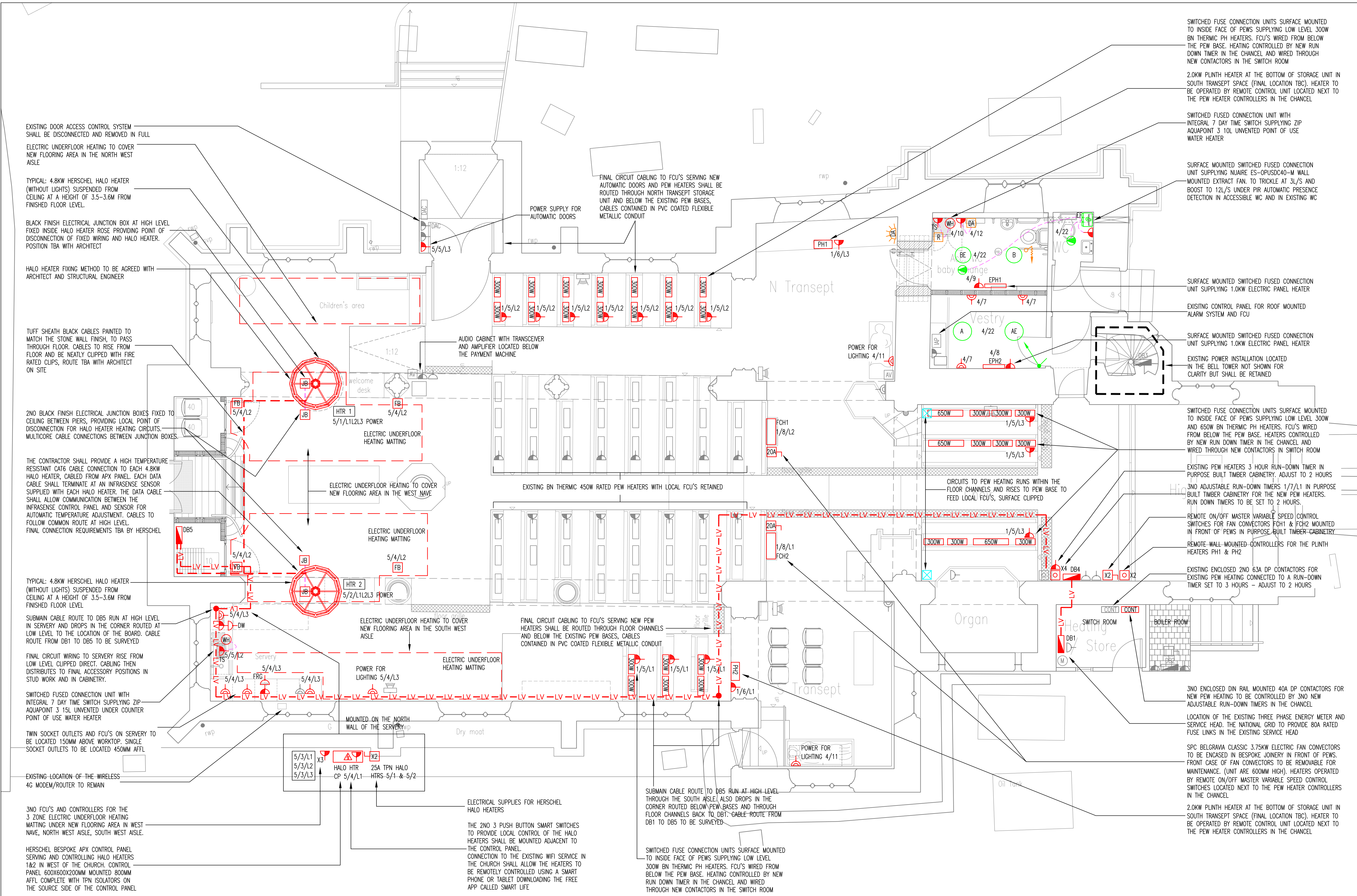


REV	16.09.25	TENDER ISSUE
DATE	NOTES	
PROJECT TITLE		
ST MICHAEL & ALL ANGELS' CHURCH EAST COKER		
DRAWING TITLE		
PROPOSED MECHANICAL SERVICES LAYOUT		
DRAWING NUMBER	REVISION	
25/2036/M/01	—	
BASED ON BUILDING OUTLINE REF:		
TENDER ISSUE		
DRAWN	BZG	
APPROVED	PM	
DATE	AUG 2025	
SCALE	⊗ A1 1:50	

bjp

THE WELL HOUSE
MANOR COURTYARD
STRATTON-ON-THE-FOSSE
BATH, BA3 4QF

01761 239193
mail@bjp-uk.com
www.bjp-uk.com



NOTES

1. SCALED INSTALLATION DIMENSIONS MUST NOT BE TAKEN FROM THIS DRAWING.
2. THIS DRAWING MUST BE READ IN CONJUNCTION WITH ALL RELEVANT DRAWINGS, DOCUMENTS AND INFORMATION PREPARED BY THE ARCHITECT AND OTHER CONSULTANTS.
3. ANY DISCREPANCY ON THIS DRAWING MUST BE REFERRED TO THE SUPERVISING OFFICER AND CLARIFICATION OBTAINED BEFORE COMMENCEMENT OF WORK.
4. ALL CABLE ROUTES SHALL FOLLOW THE CHURCH CARE GUIDANCE NOTE FOR ELECTRICAL WIRING IN CHURCHES. ALL CABLE ROUTES SHALL BE AGREED WITH THE ARCHITECT AND ENGINEERS PRIOR TO INSTALLATION. EXPOSED CABLE ROUTES SHALL GENERALLY FOLLOW EXISTING CABLING ROUTES, UTILISING EXISTING FIXINGS. NEW FIXINGS SHALL BE BY AGREEMENT WITH THE ARCHITECT ONLY AND SHALL BE INTO SOUND MORTAR JOINTS ONLY NEATLY CLIPPED WITH FIRE RATED CLIPS. NEW FIXING INTO STONE SHALL NOT BE PERMITTED UNDER ANY CIRCUMSTANCE.
5. BELL TOWER IS OUTSIDE THE SCOPE OF WORKS.
6. GREY DENOTES EXISTING SMALL POWER SERVICES TO BE RETAINED.

LEGEND

- INFRASENSE HEATING CONTROL PANEL
- DISTRIBUTION BOARD
- ISOLATOR
- BLACK CABLE JUNCTION BOX AT HIGH LEVEL
- ENCLOSED CONTACTORS
- CABLE DROPS CLIPPED DIRECT AS NOTED
- SINGLE SWITCHED SOCKET OUTLET
- TWIN SWITCHED SOCKET OUTLET
- SWITCHED CONNECTION UNIT
- SWITCHED FUSED CONNECTION UNIT WITH INTEGRAL 7 DAY TIME SWITCH SERVING POINT OF USE HOT WATER HEATER
- FLUSH FLOOR MOUNTED BOX WITH TWIN SWITCHED SOCKET OUTLET
- CEILING MOUNTED LED LUMINAIRE
- SINGLE WAY 20A GRID MOUNTED SWITCH
- EXTRACT FAN CONTROL UNIT
- EXTRACT FAN BY OTHERS
- DISABLED ALARM RESET
- DISABLED ALARM POWER SUPPLY UNIT
- DISABLED ALARM OVER DOOR AUDIO/VISUAL UNIT
- DISABLED ALARM PULL CORD
- HAND DRYER
- WATER HEATER BY OTHERS
- HERSCHEL 4800W HALO HEATER (WITHOUT LIGHTS)
- FCH ELECTRIC FAN CONVECTOR HEATER
- PH ELECTRIC PLINTH HEATER
- EPH ELECTRIC PANEL HEATER
- 650W BN THERMIC 650W UNDER PEW HEATER
- 300W BN THERMIC 300W UNDER PEW HEATER
- ELECTRIC UNDER FLOOR HEATING MATTING
- APPROXIMATE SUBMAIN CABLE ROUTES TO DB4 & DB5
- APPROXIMATE CABLE ROUTES TO HALO HEATERS

- EXISTING THREE PHASE ENERGY METER AND FUSED SERVICE HEAD
- EXISTING DISTRIBUTION BOARD
- EXISTING ISOLATOR
- EXISTING SINGLE SWITCHED SOCKET OUTLET
- EXISTING TWIN SWITCHED SOCKET OUTLET
- EXISTING SWITCHED CONNECTION UNIT
- EXISTING AV WALL OUTLET PLATE
- EXISTING WALL MOUNTED AUDIO SPEAKER

GREY DENOTES EXISTING TO BE RETAINED

-	16.09.25	TENDER ISSUE
REV	DATE	NOTES
PROJECT TITLE		
ST MICHAEL & ALL ANGELS' CHURCH		
EAST COKER		
DRAWING TITLE		
PROPOSED ELECTRICAL SERVICES LAYOUT		
DRAWING NUMBER		REVISION
25/2036/E/01		-
BASED ON BUILDING OUTLINE REF:		
TENDER ISSUE		
DRAWN	PJH	
APPROVED	AC	
DATE	SEPT 2025	
SCALE	0 A1	1:50

bjp

THE WELL HOUSE
MAJOR COURTYARD
STRATTON-ON-THE-FOSSE
BATH BA3 4QF

01761 239193
mai@bjp-uk.com
www.bjp-uk.com

LUMINAIRE SCHEDULE

- A. REFERENCE LUMINAIRES
DEXTRA DISCALO DSC L30 OP 19.6W 1915 LUMENS 3000K, SURFACE CEILING MOUNTED FIXED OUTPUT LED LUMINAIRE WITH OPAL DIFFUSER FINISHED WHITE
- AE. REFERENCE LUMINAIRES
DEXTRA DISCALO DSC L30 OP LS3 19.6W 1915 LUMENS 3000K, SURFACE CEILING MOUNTED FIXED OUTPUT LED LUMINAIRE WITH INTEGRAL SELF-TEST 3HOUR EMERGENCY OPAL DIFFUSER FINISHED WHITE
- B. REFERENCE LUMINAIRES
DEXTRA AMENITY DECORATIVE AMED L30 R25E 19.7W 2427 LUMENS 3000K, SURFACE CEILING MOUNTED FIXED OUTPUT LED LUMINAIRE WITH PRESENCE DETECTION OPAL DIFFUSER FINISHED WHITE
- BE. REFERENCE LUMINAIRES
DEXTRA AMENITY DECORATIVE AMED L30 R25E LS3 19.7W 2427 LUMENS 3000K, SURFACE CEILING MOUNTED FIXED OUTPUT LED LUMINAIRE WITH INTEGRAL SELF-TEST 3HOUR EMERGENCY AND PRESENCE DETECTION OPAL DIFFUSER FINISHED WHITE