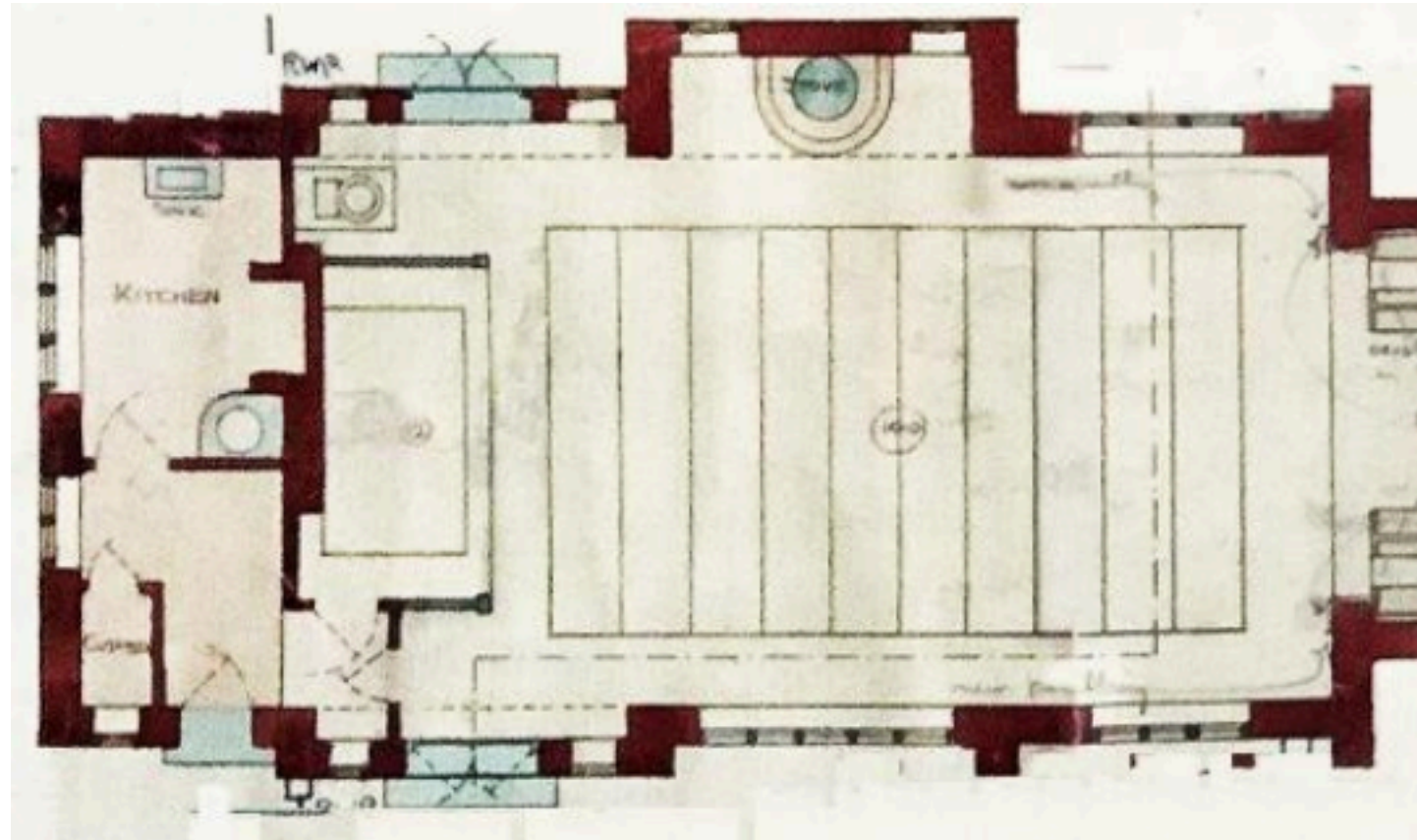


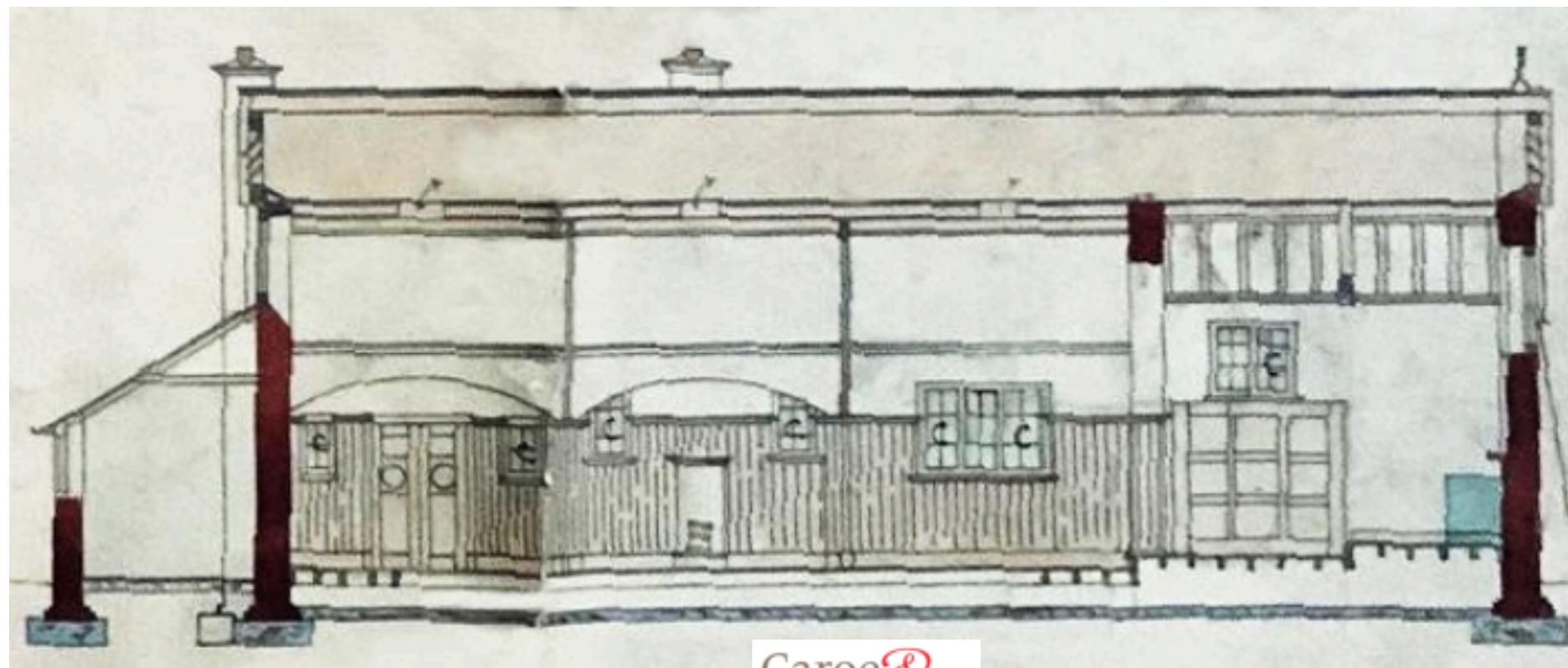
PLAN NTS

CONTEXT GENERAL ARRANGEMENT



PLAN & ELEVATION

LONG SECTION LOOKING NORTH NTS



CONTEXT IMAGES
Original 1908 Contract Drawings

(The church is essentially unchanged save for replacement of the stove with open fire, different location for the font and WC introduced to cupboard off scullery lobby)

Caroe &
Partners
Architects

CHARTERHOUSE MENDIP St Hugh

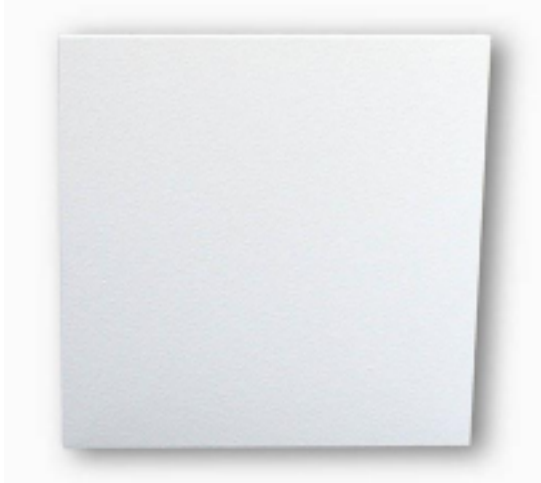
REPLACEMENT HEATING



PROPOSAL DETAILS OF FITTING_S

- PROPOSED HEATERS A
Flexel Ecosun
LOCATIONS
- Nave Wall Mounted above wall plate
 - Chancel Walls, existing locations
 - Kitchen Wall. New location, BELOW RIGHT

EXISTING OLD STYLE RADIANT HEATERS TRIAL HEATER IN-SITU



PROPOSED HEATERS B
Flexel Ecosun 300U+ and 600U+
LOCATIONS

- WC Wall Mounted
 - Scullery Lobby Ceiling Mounted (larger, rectangular)
- WC Indicative location ENTRANCE LOBBY Indicative location Wiring through



ceiling



KITCHEN New location for 1800W heater Surface wiring from intake board to left

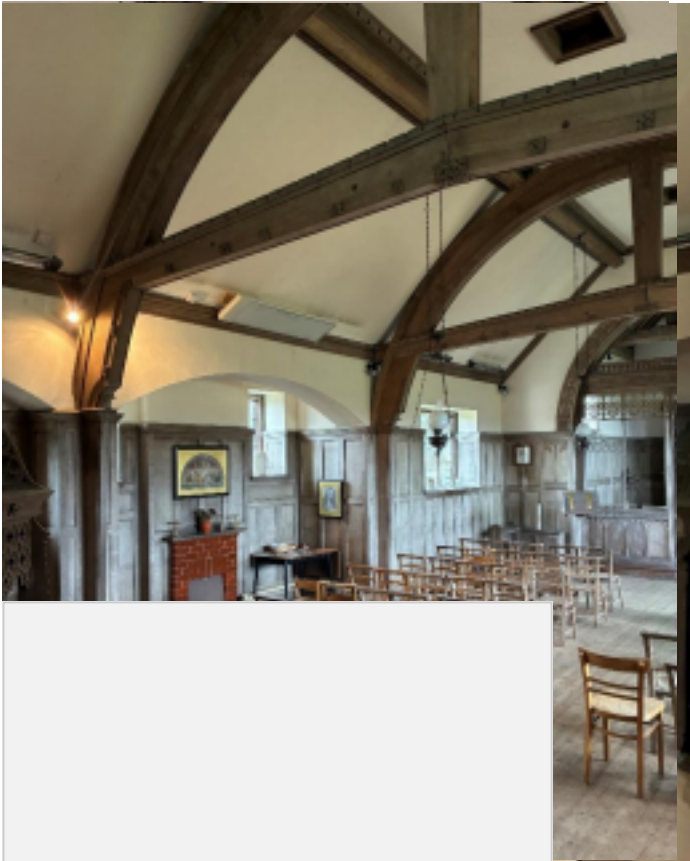


CHARTERHOUSE MENDIP St Hugh
Caroe & Partners Architects

REPLACEMENT HEATING

Scale NTS Number W271 / Heating / 01 Date September 2025 Sheet 2 of 4

KEY PHOTOS SHOW



NAVE North Wall NAVE South Wall NAVE West End (Ino. heater in each end bay replaced with 1no. 1800W

ING GENERAL LOCATIONS – See Key Plan, Sheet 4

DESCRIPTION

Defunct traditional heaters replaced with new as below
Generally, 1no. 3.6kw heater in same location, replacing

2no. 1.8kw.

New fixed on painted pattress plate to achieve fixings in lath and plaster.

CHANCEL South Wall
CHANCEL North Wall

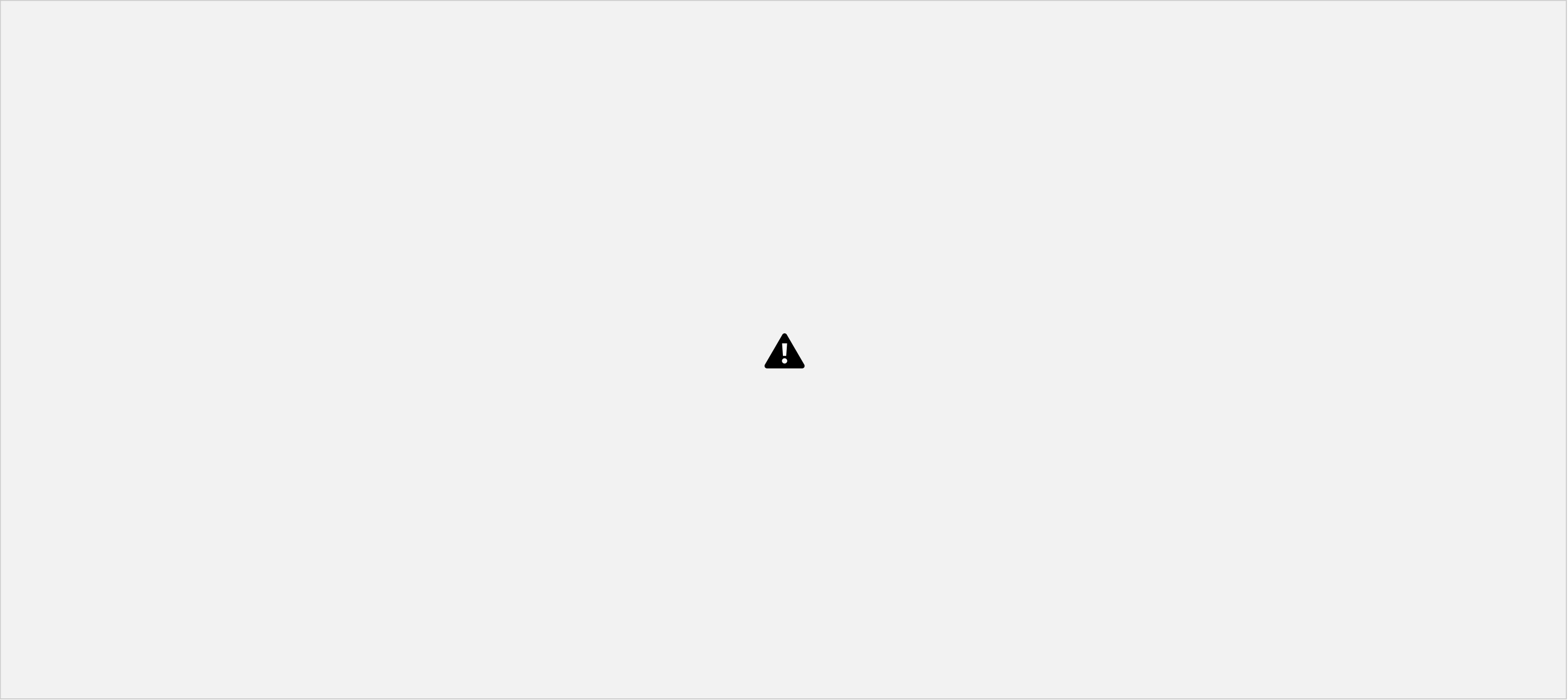
CHARTERHOUSE MENDIP St Hugh



REPLACEMENT HEATING

Scale NTS Number W271 / Heating / 01 Date September 2025 Sheet 3 of 4

KEY PLAN



KEY

- Existing radiant heater removed
- New wall/ ceiling mounted heater Type A
- New wall/ ceiling mounted heater Type b
- Under sink water heater



CHARTERHOUSE MENDIP St Hugh

REPLACEMENT HEATING