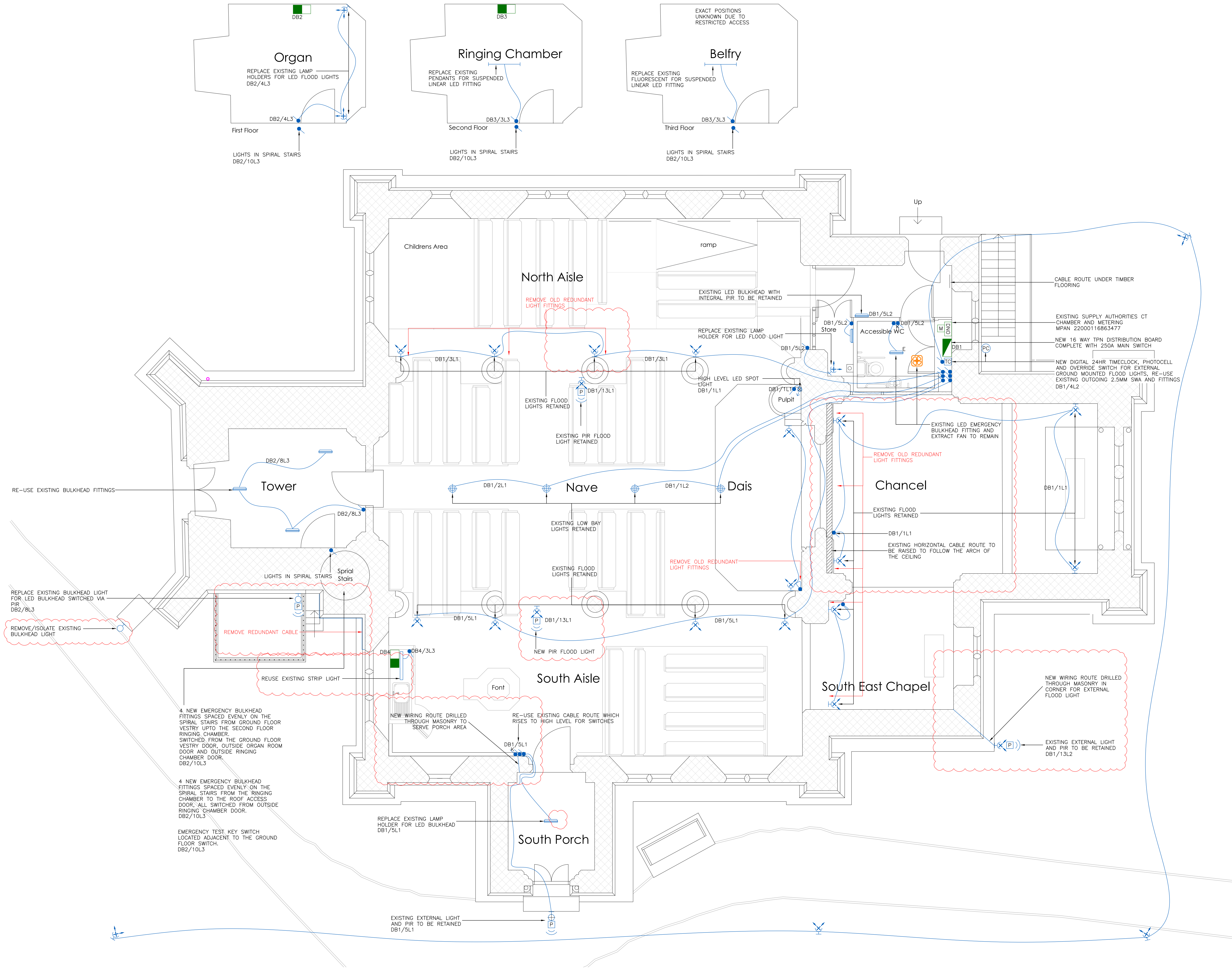


LIGHTING LEGEND:

- PROXIMITY SENSOR (PIR)
- FLOOD LIGHT
- ONE WAY SWITCH
- EMERGENCY TEST KEY SWITCH
- PHOTO CELL
- TIME CLOCK
- BULKHEAD LIGHT
- EXISTING HQI LOW BAY FITTING
- WALL MOUNTED LIGHT
- LINEAR LED FITTING
- ADJUSTABLE LED SPOT LIGHT
- LED STRIP
- EXTRACT FAN (CEILING MOUNTED)
- "E" DENOTES EMERGENCY FITTING



T02	28.03.25	AMENDED FOLLOWING COMMENTS
T01	17.12.24	FIRST ISSUE
REV	DATE	NOTE

**Wheeler's**  
ELECTRICAL | HEATING+PLUMBING | FIRE+SECURITY  
An Employee Owned Company  
01373 823755  
wheelersgroup.co.uk

CONTRACT		CHURCH OF ST AUGUSTINE, CLUTTON	
SERVICE		LIGHTING LAYOUT	
LOCATION		GROUND FLOOR	
STATUS		DATE	
TENDER		MAR 25	
CONTRACT NO.	DRAWN BY	SIZE	SCALE
WE00673	JPS	A1	1:50
DRAWING NO.	REVISION		T02
CH-DR-GF-E101			