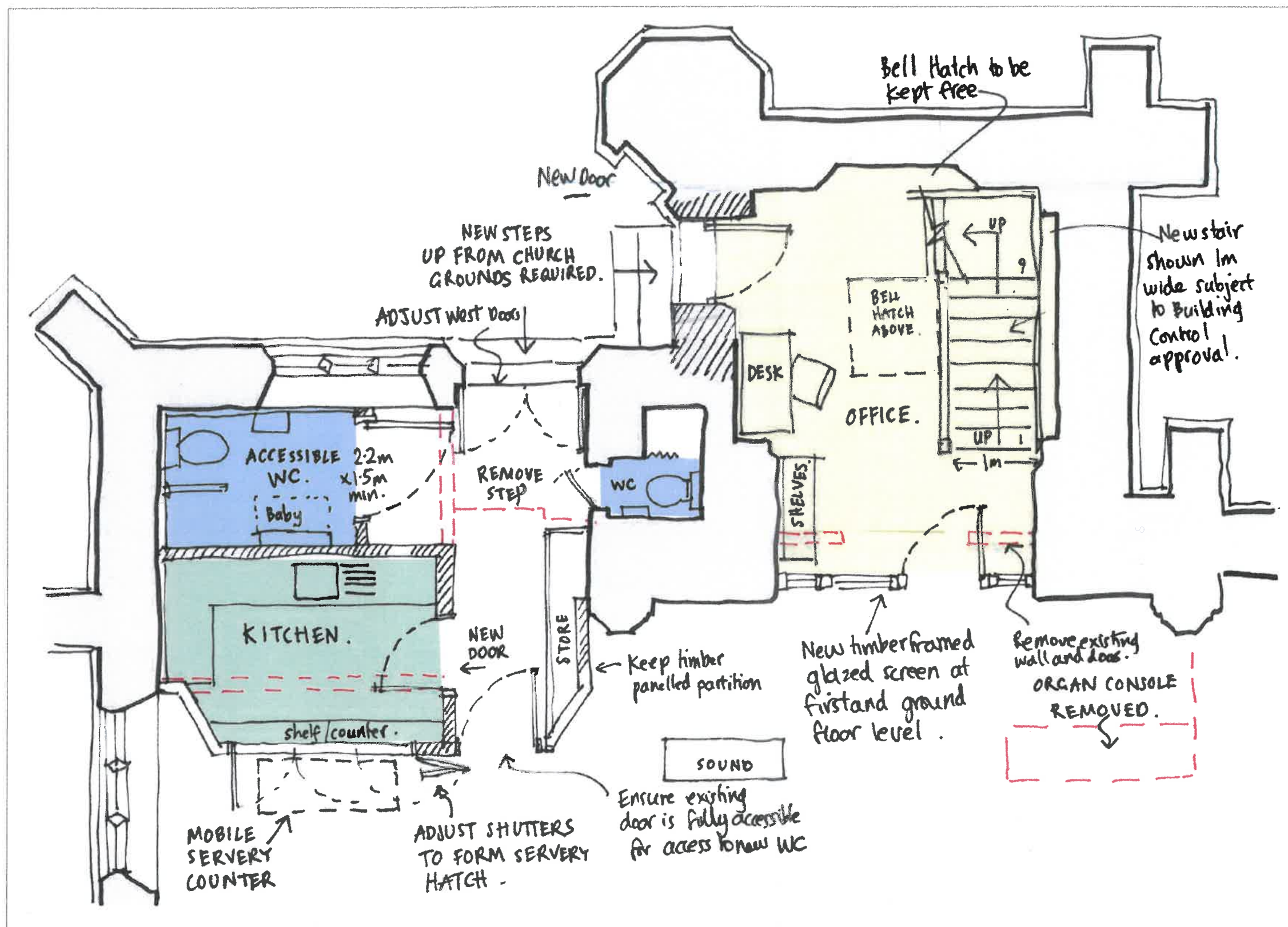




Option 6:

- Existing creche space which is currently used as office, to house new accessible WC accessed from lobby.
- Existing small WC to remain.
- Step within lobby to west doors removed and floor raised with external west doors adjusted accordingly.
- Servery to be enlarged to include additional worktop and storage. Folding doors to be altered to form servery hatch, with additional door to be formed from lobby.
- Office relocated to base of tower with additional door with window (shown in south wall) to provide daylight and access. Shelf storage and desk with space for a small meeting table and photocopier location.
- Retractable ladder to be replaced by new stair leading up to first floor meeting space/office assuming organ can be removed with necessary permissions. Stair shown as 1m wide subject to approval by Building Control and also church management plan.
- New timber framed glazed screen to base of tower to provide security for staff and views into church. New screen to continue up to enclosed first floor space. (see SKW06B)



OPTION 6 GROUND FLOOR PLAN

Scale: 1:50 approx.



CHEDBURN•CODD
CONSERVATION ARCHITECTS
Historic Building Consultants

Glove Factory Studios, 1 Brook Lane, Holt,
Bradford-on-Avon, Wiltshire BA14 6RL

T: 01225 859999 www.chedburn.com e: chedburn@chedburn.com

Project St Swithun's Church
Bathford

Drawing West End Alterations
As Proposed

Stage Sketch

Drawing No.	Scale	Date
0704/SKW06A	1:50 @ A3	Feb 2025