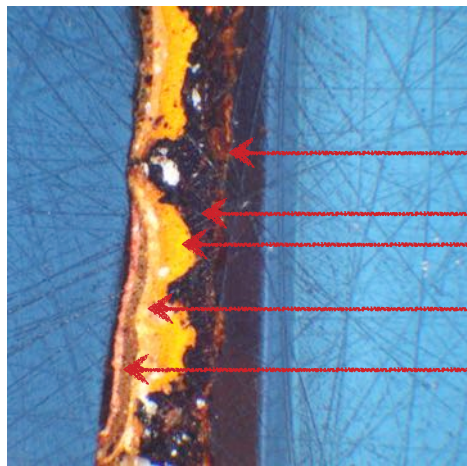


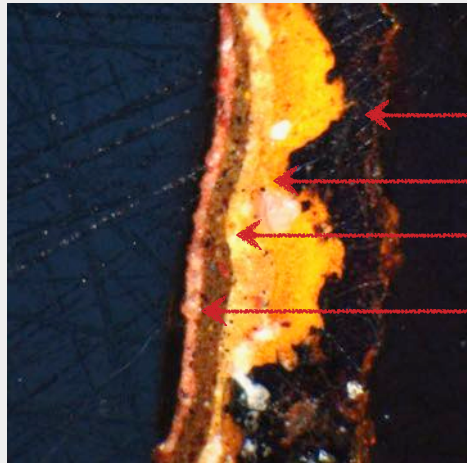
Appendix I - Montague Tomb Railings

Paint Sample 1
From the centre of one of the square palings.



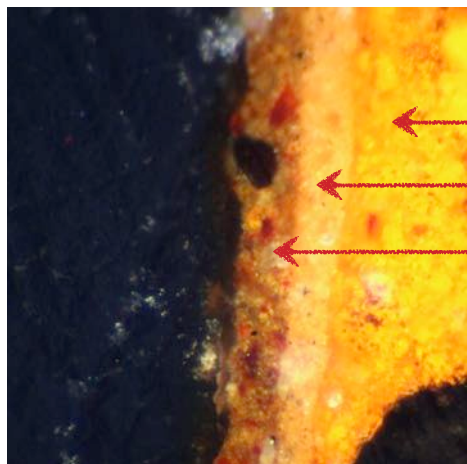
x 50 Magnification
Forge coat and the original paint coating layers

- ← Rust pieces
- ← Blacksmith's black coating
- ← Red lead primer layer
- ← Intermediate layer
- ← Dark red topcoat layers



x 100 Magnification
Earliest layers

- ← Blacksmith's black forge paint layer
- ← Red lead primer
- ← Intermediate layer
- ← Topcoat dark red finish

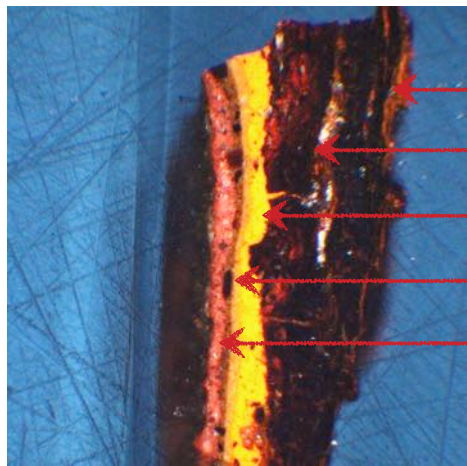


X 400 Magnification

- ← Red lead primer
- ← Intermediate layer
- ← Topcoat dark red layer

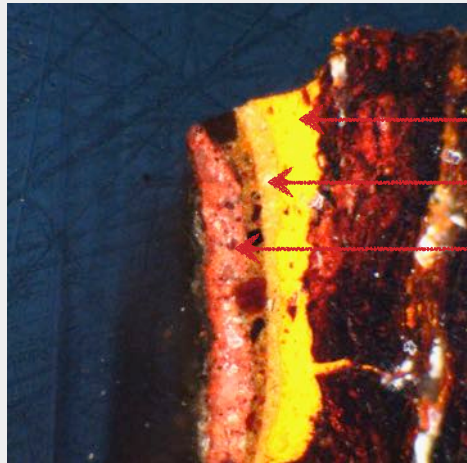
Appendix I - Montague Tomb Railings

Paint Sample 2
From the base of one of the square palings.



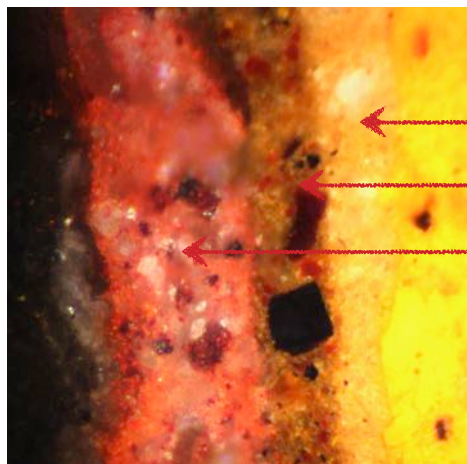
x 50 Magnification

- ← Rust layer
- ← Forge black paint layer
- ← Red lead primer coat
- ← Pinky intermediate layer
- ← Current Dark Red topcoat layers



x 100 Magnification

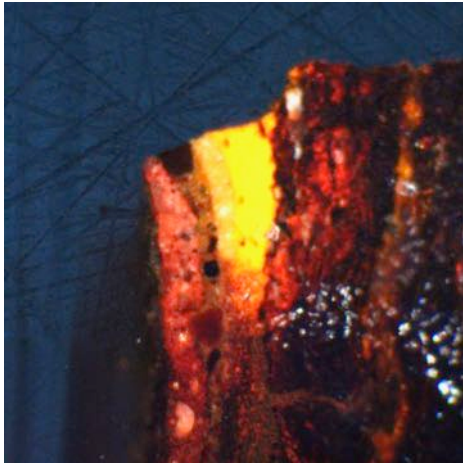
- ← Red lead oxide primer layer
- ← Pinky red oxide/white lead intermediate coat
- ← Dark red topcoat layers



X 400 Magnification
First layers

- ← Intermediate layer
- ← First topcoat layer
- ← Final topcoat layer

Lead Paint Present - Yes



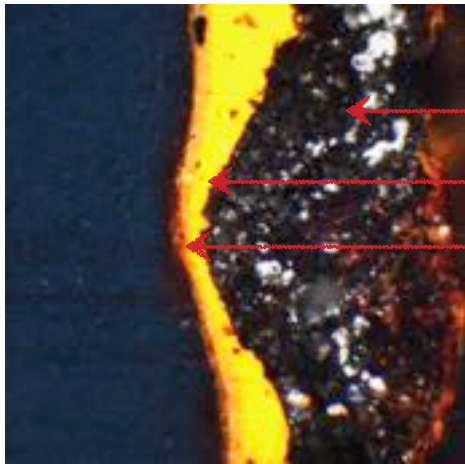
Lead Test

Lead-based ingredients present in all three paint layers as can be seen by the blackening to the lower half of the sample where it has reacted to form lead sulphide.

Appendix I - Montague Tomb Railings

Paint Sample 3

From a paling below the lockbox area to the gate panel.



x 50 Magnification

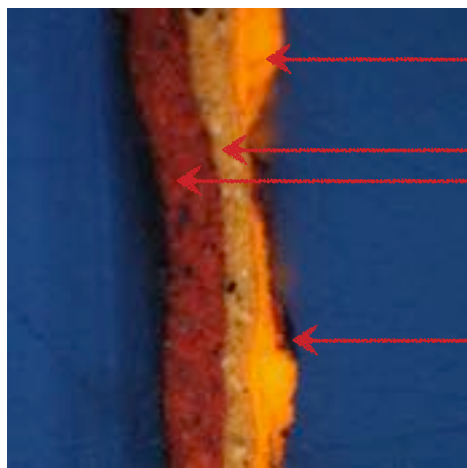
Thick black forge paint layer

Red lead primer layer

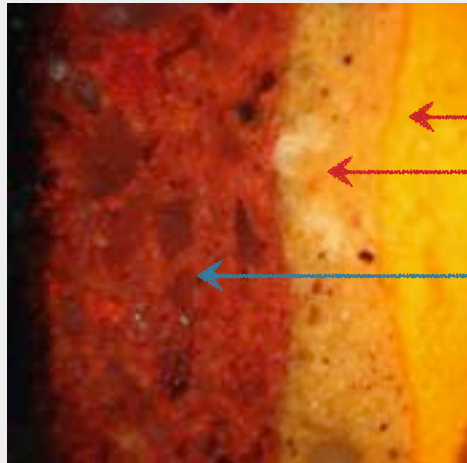
Topcoat layers

Appendix I - Montague Tomb Railings

Paint Sample 4
From the end of a section
of top rail on one side.



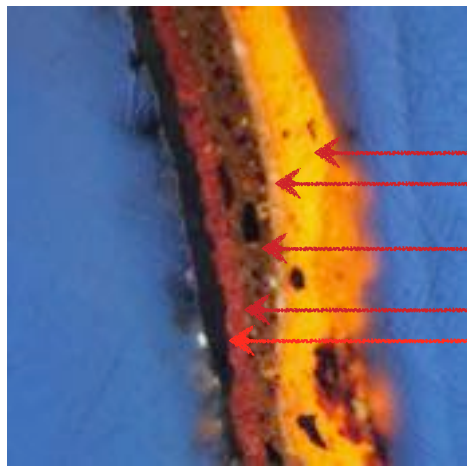
x 50 Magnification
Red lead primer layer
Intermediate layer
Topcoat layer
Black forge paint



x 400 Magnification
Earliest layers
Primer layer
Intermediate layer
Dark red topcoat layer

Appendix I - Montague Tomb Railings

Paint Sample 5
From a top rail section adjacent to a paling hole.



x 50 Magnification

Sample showing evidence for the varnish coat

← Earliest red lead primer layer

← Pinky intermediate coat

← First topcoat layer

← Second topcoat layer

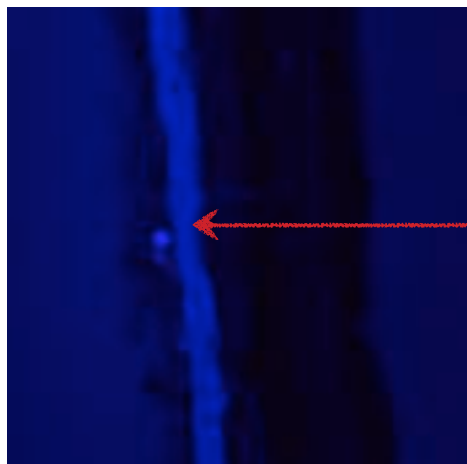
← Varnish layer (to give a glossy finish)



x 100 Magnification

Earliest layers

Individual paint layers clearly defined with the varnish layer on top that looks black under normal light.

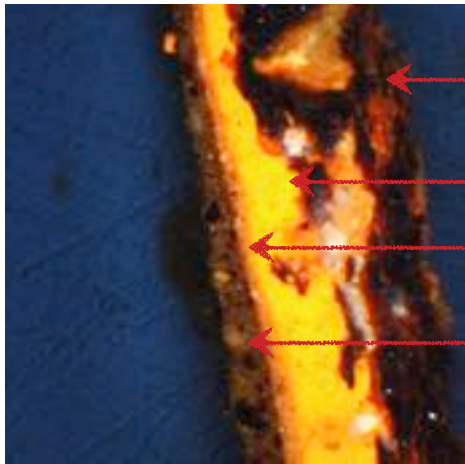


← The varnish layer clearly visible as a glowing line under UV light as the resins present fluoresce un these condition.

Appendix I - Montague Tomb Railings

Paint Sample 6

From a corner post lower section above decorative base.



x 50 Magnification

← Mix forge paint and rust pieces

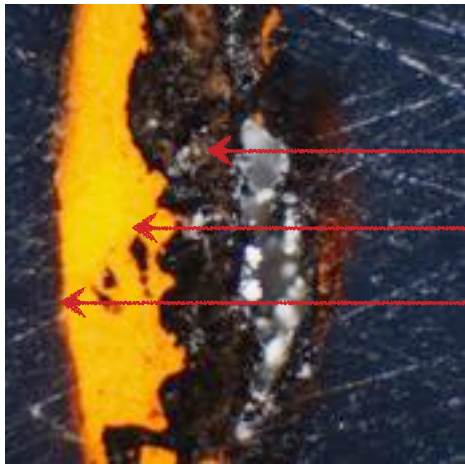
← Red lead primer layer

← Intermediate pinky layer

← Dark red topcoat layers

Appendix I - Montague Tomb Railings

Paint Sample 7
From a flag staff just below the decorative top piece.



x 50 Magnification

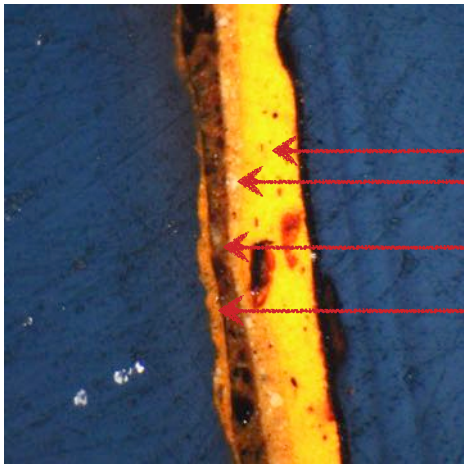
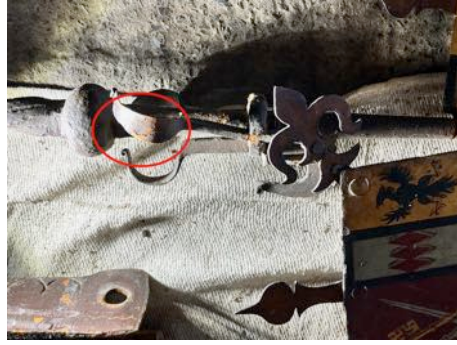
Thick black forge paint layer

Red lead primer layer

Thin finish coats

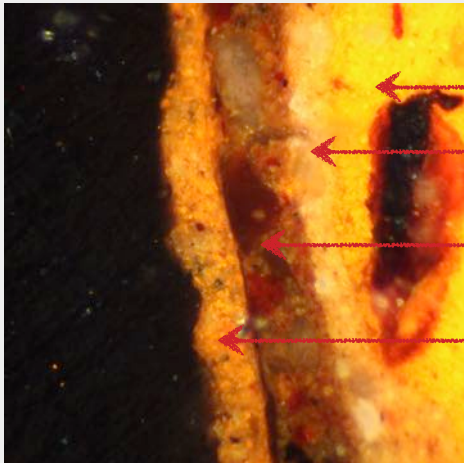
Appendix I - Montague Tomb Railings

Paint Sample 8
From a flag staff top decor
'C' piece.



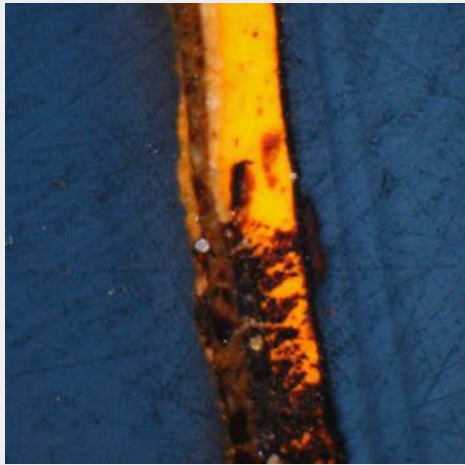
x 50 Magnification
Evidence for a yellow layer on top of the dark red (base for gilding?)

- ← Red lead primer layer
- ← Pinky intermediate coat
- ← Dark red topcoat layer
- ← Yellow paint layer on top of the dark red finish coat



- x 100 Magnification
- ← Red lead primer layer
 - ← Intermediate layer
 - ← Dark red topcoat layer
 - ← Yellow layer found on top of the dark red finish

Lead Paint Present - Yes

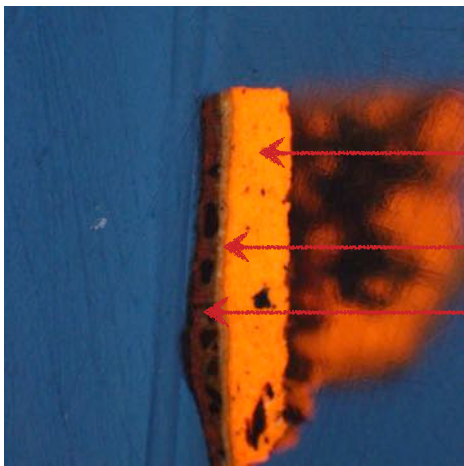


Lead Test

Lead components present in each of the paint layers found on the sample.

Appendix I - Montague Tomb Railings

Paint Sample 9
From a part of crucifix
above flag to staff.

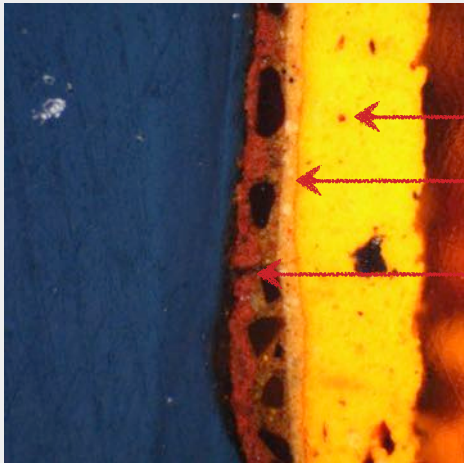


x 50 Magnification

Red lead primer layer

Intermediate coat

Dark red topcoat layer

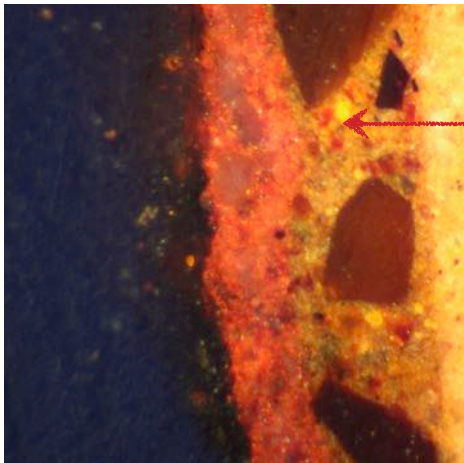


x 100 Magnification

Primer layer

Intermediate coat

Topcoat with large pigment particle visible

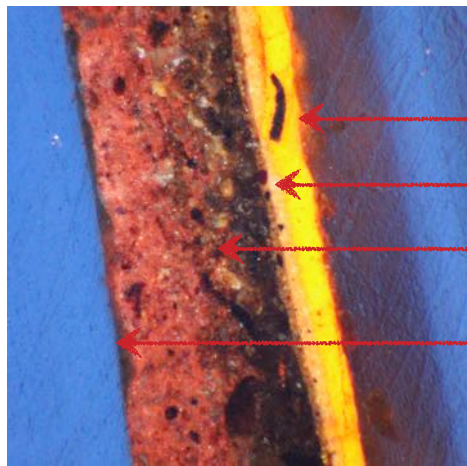


X 400 Magnification

Close up of two topcoat layers showing the large paint particles

Appendix I - Montague Tomb Railings

Paint Sample 10
From the base rail
adjacent to a paling hole.



x 100 Magnification

Red lead primer layer

Intermediate pinky layer

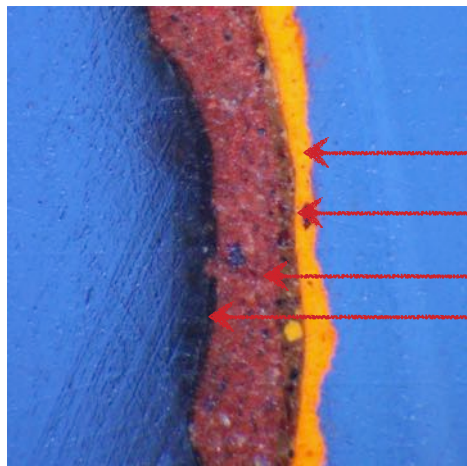
Thick topcoat layers

Possible remains of varnish layer

Appendix I - Montague Tomb Railings

Paint Sample 11

From a top rail adjacent to a diamond paling hole.



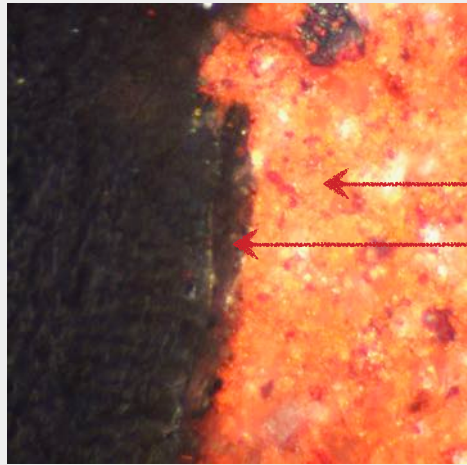
x 50 Magnification

Red lead oxide primer layer

Thin intermediate coat

Topcoat layers

Remains of the varnish layer



x 400 Magnification

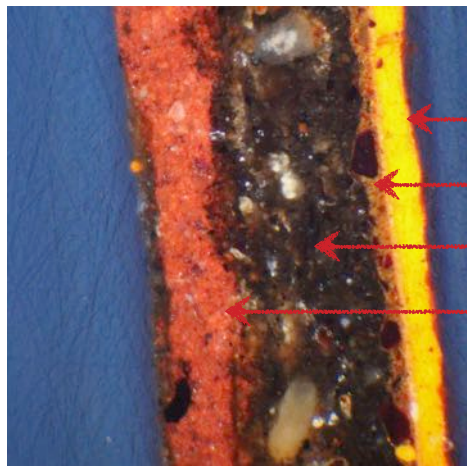
Dark red topcoat layers

Varnish layer on top of the dark red paint layer

Appendix I - Montague Tomb Railings

Paint Sample 12

From the end of a short top rail at the connection point.



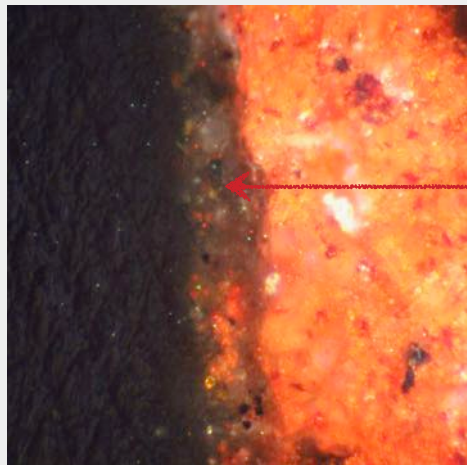
x 50 Magnification

← Thin red lead primer layer

← Pinky intermediate layer

← Thick, dirty first topcoat layer (rough paint mix)

← Finish topcoat paint layer



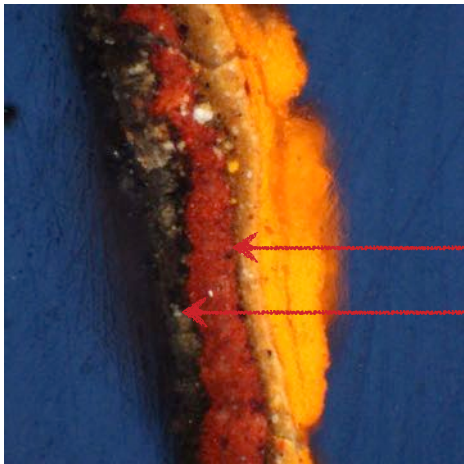
x 400 Magnification

Earliest layers

← Evidence for the partial remains of the varnish layer but degraded.

Appendix I - Montague Tomb Railings

Paint Sample 13
From the face of a short section of top rail.

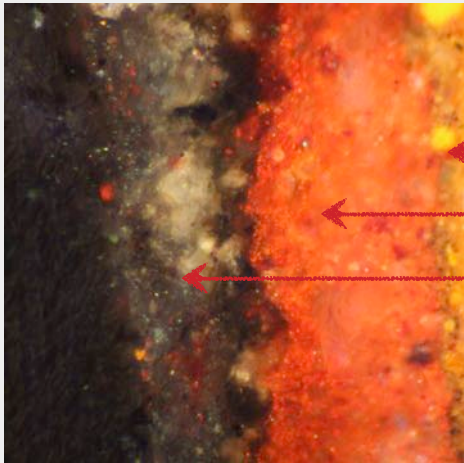


x 100 Magnification

Same make up of paint layers as seen on other samples.

← Dark red topcoat layer

← Varnish layer evident on top of the paint layer



x 400 Magnification

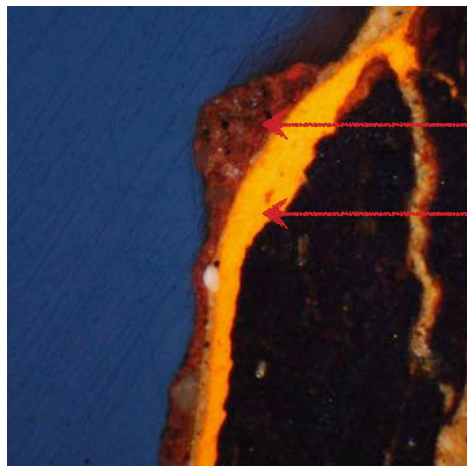
← Intermediate layer

← Topcoat layer

← Varnish layer

Appendix I - Montague Tomb Railings

Paint Sample 14
From the base of one of
the iron corner posts.

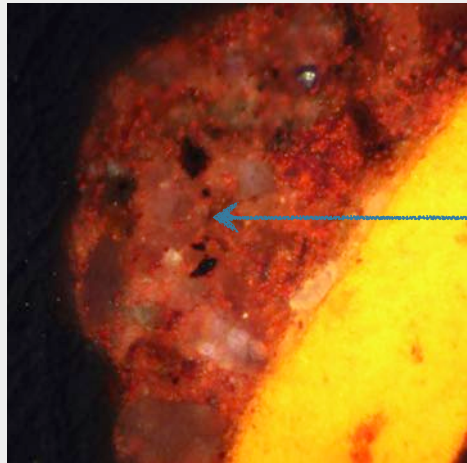


x 100 Magnification

Sample from the underside of post base

← Topcoat that has run down to the base of the post

← Red lead primer



x 400 Magnification

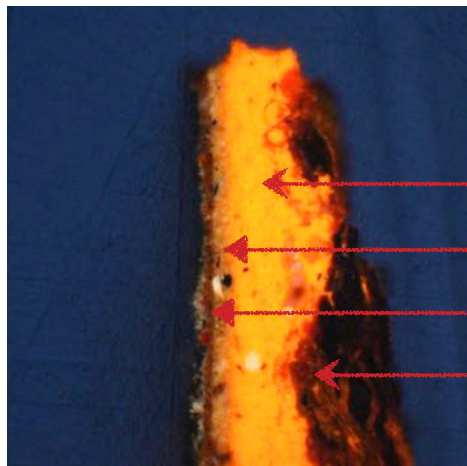
Close up image

← Run of topcoat magnified.

Appendix I - Montague Tomb Railings

Paint Sample 15

From the side of one of the centre posts supporting a circular shield.



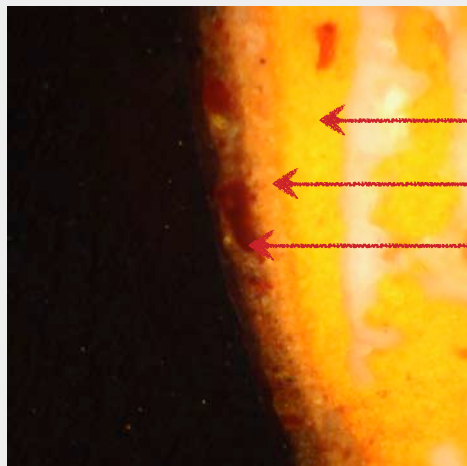
x 50 Magnification

Thick red lead primer layer

Pink intermediate layer

Dark red topcoat

Rust layer



x 200 Magnification

Earliest layers

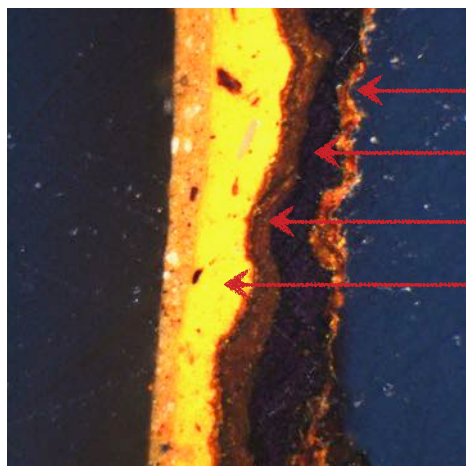
Primer layer

Intermediate layer

Dark red topcoat layer

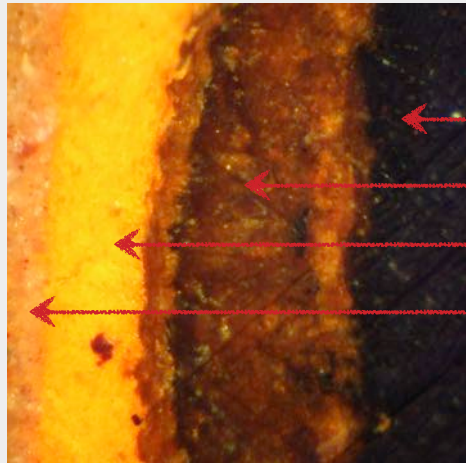
Appendix I - Montague Tomb Railings

Paint Sample 16
From the base rail of the gate panel underside.



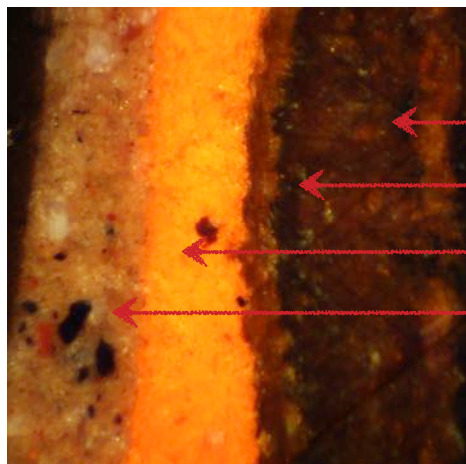
x 100 Magnification

- ← Rust layer
- ← Black forge paint
- ← Brown finish coats
- ← Red lead primer coat



x 400 Magnification
Earliest layers

- ← Black forge paint
- ← Earliest brown finish coats (2 no)
- ← Red lead primer coat
- ← Pinky intermediate coat



X 400 Magnification
First layers

- ← First brown layer
- ← Second brown layer (original surface)
- ← Red lead primer layer
- ← Present topcoat layers