

DETAIL A

25mm boards to top  
with 12mm boarded panel

top 100mm x 45mm moulded edge  
on three sides with mitres (see plan)  
moulding:  
4mm chamfer to top edge  
27 x 10mm ogee  
8mm fillet  
6mm chamfer

24 x 72mm top rail

24 x 95mm bottom rail

line of frame up right

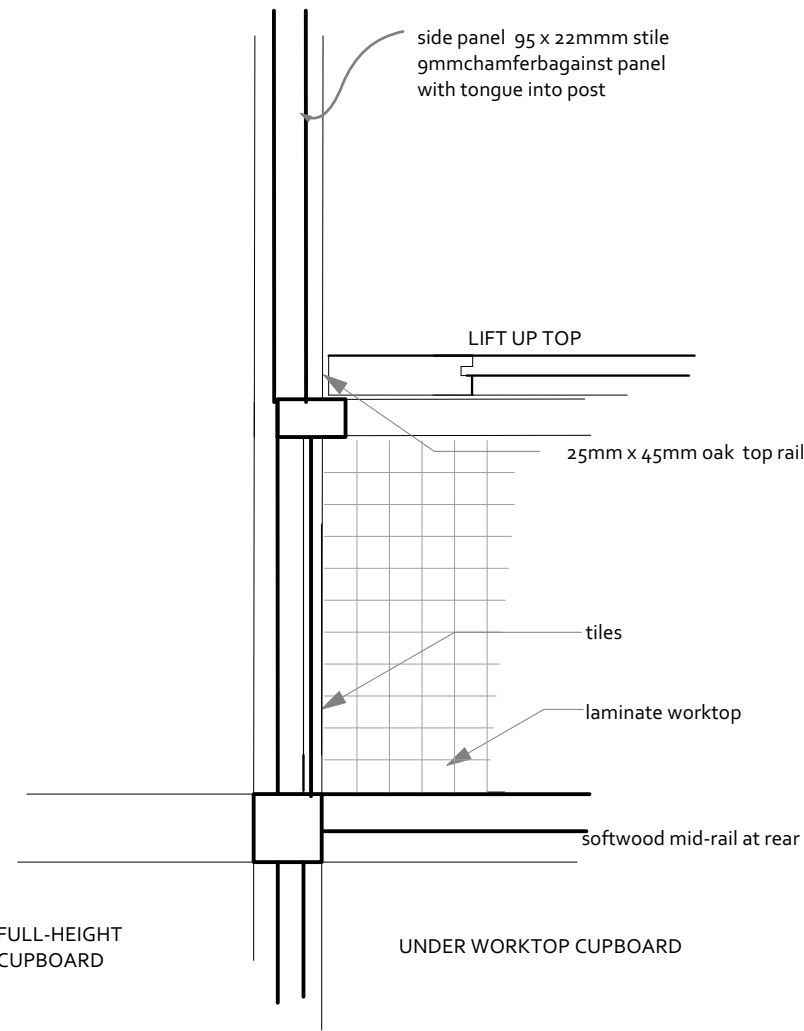
DETAIL B

FOR CENTRE SECTION:

45mm moulded oak lip

proprietary laminated  
worktop

doors with 72mm x 22mm  
top rails and stiles with  
9mm chamfer and 9mm oak panels  
and 220 x 2mm bottom rail  
with 30 degree chamfer

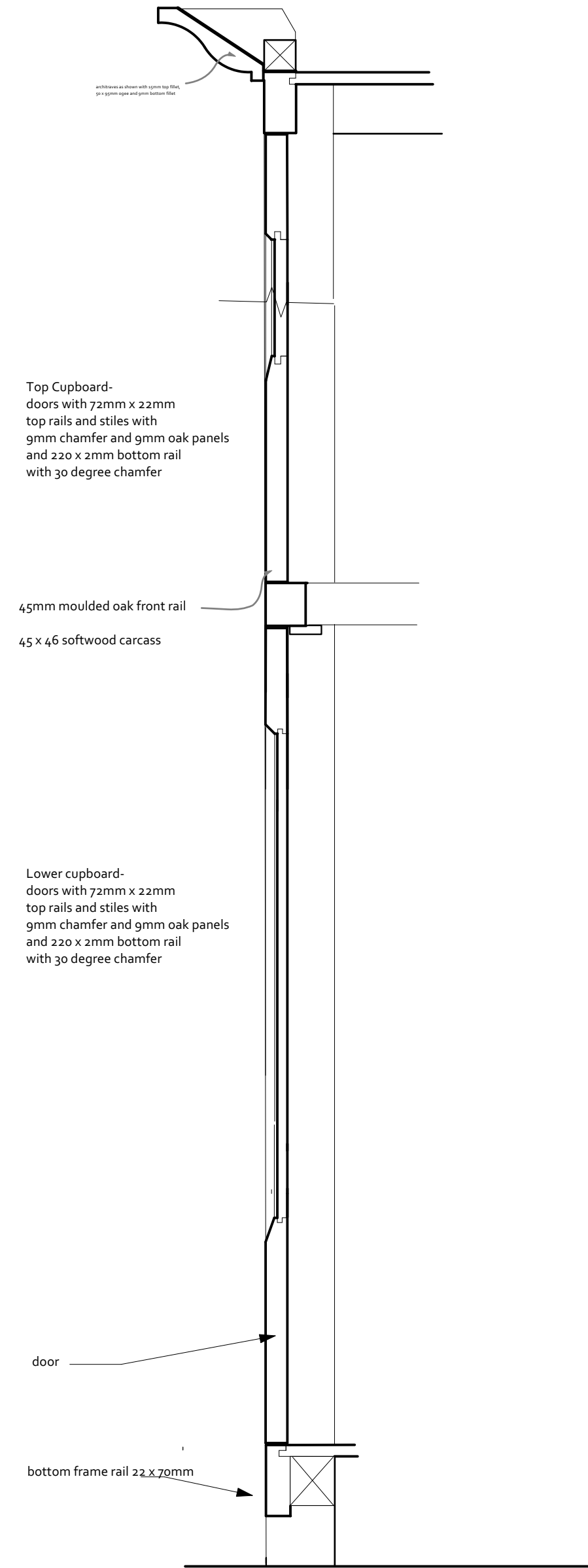


DETAIL C

FULL-HEIGHT  
CUPBOARD

UNDER WORKTOP CUPBOARD

## SECTION THROUGH LIFT UP LID



DETAIL D

## SECTION THROUGH TALL DOORS

DETAIL E

72 x 45mm post

45 x 45 sub-frame

95mm stile chamfered against panel  
with tongue into corner post

72 x 72mm corner post  
stop chamfer at corner

section DETAIL C

96x45 intermediate  
oak frame upright

## DETAIL PLAN

**Annie Evans architect**

Sowdens  
Fiddington  
Bridgwater  
TA5 1JH  
tel 01278 732339  
e-mail [architecture@annie-evans.co.uk](mailto:architecture@annie-evans.co.uk)

Job Norton Fitzwarren ALL SAINTS  
Drawing Proposed Joinery details  
Number 237.21  
Scale 1:5  
Date September 2024  
Revisions