



Donald Insall Associates
Chartered Architects and Historic Building Consultants

**St James' Church
Christleton**

Drawing Updates
December 2023

Contents

1.0	Drawing Issue Sheet
2.0	Updated Drawings

Contact information

Tony Barton
Tony.Barton@insall-architects.co.uk

Chester Office

Donald Insall Associates
Bridgegate House, 5 Bridge Place,
Chester, CH1 1SA
www.insall-architects.co.uk

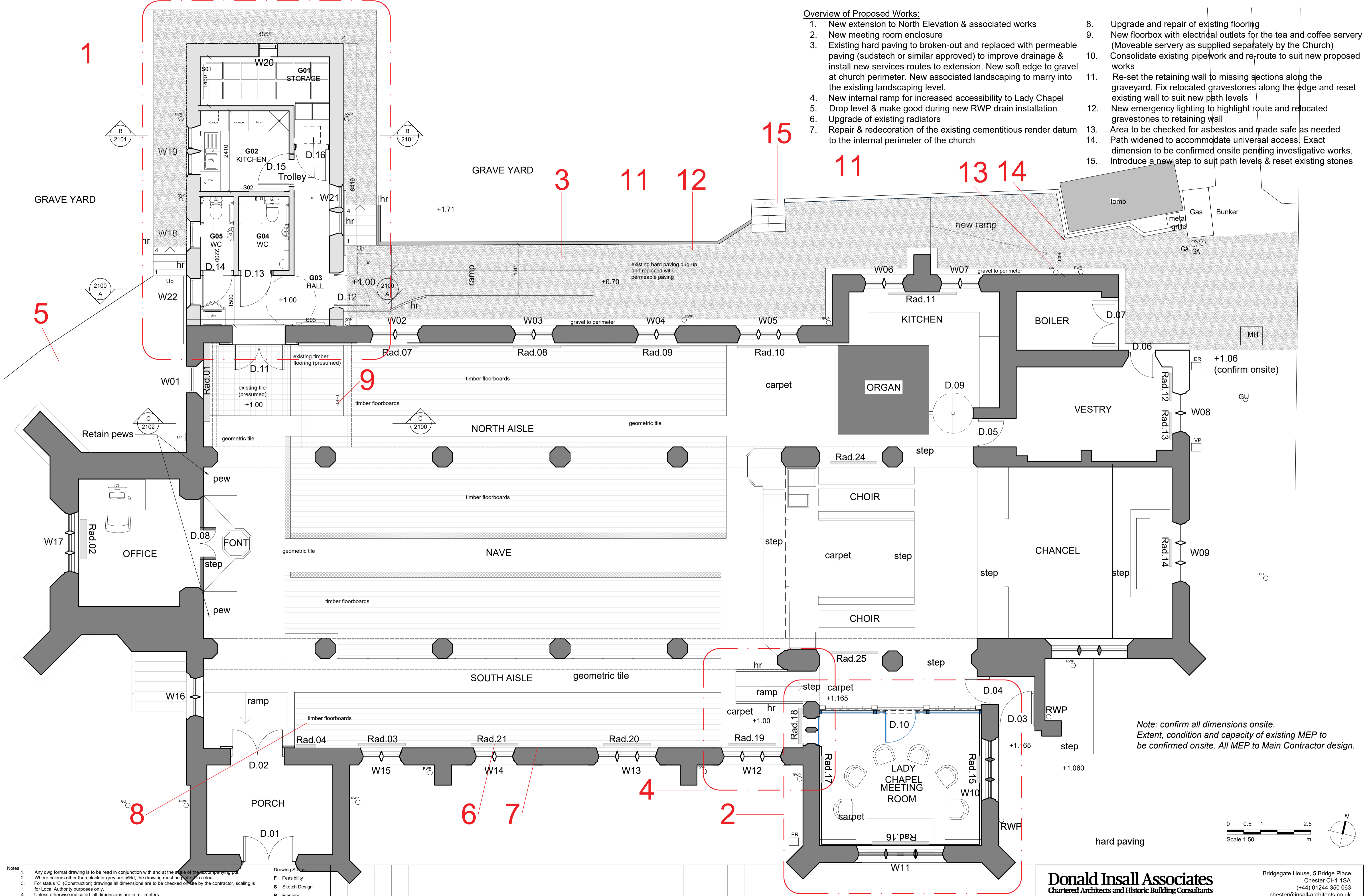
Issue date: December 2023
Prepared by: Sinéad Scullion
Checked by: Tony Barton

This report and all intellectual property rights in it and arising from it are the property of or are under licence to Donald Insall Associates or the client. Neither the whole nor any part of this report, nor any drawing, plan, other document or any information contained within it may be reproduced in any form without the prior written consent of Donald Insall Associates or the client as appropriate. All material in which the intellectual property rights have been licensed to DIA or the client and such rights belong to third parties may not be published or reproduced at all in any form, and any request for consent to the use of such material for publication or reproduction should be made directly to the owner of the intellectual property rights therein.



[illegible]



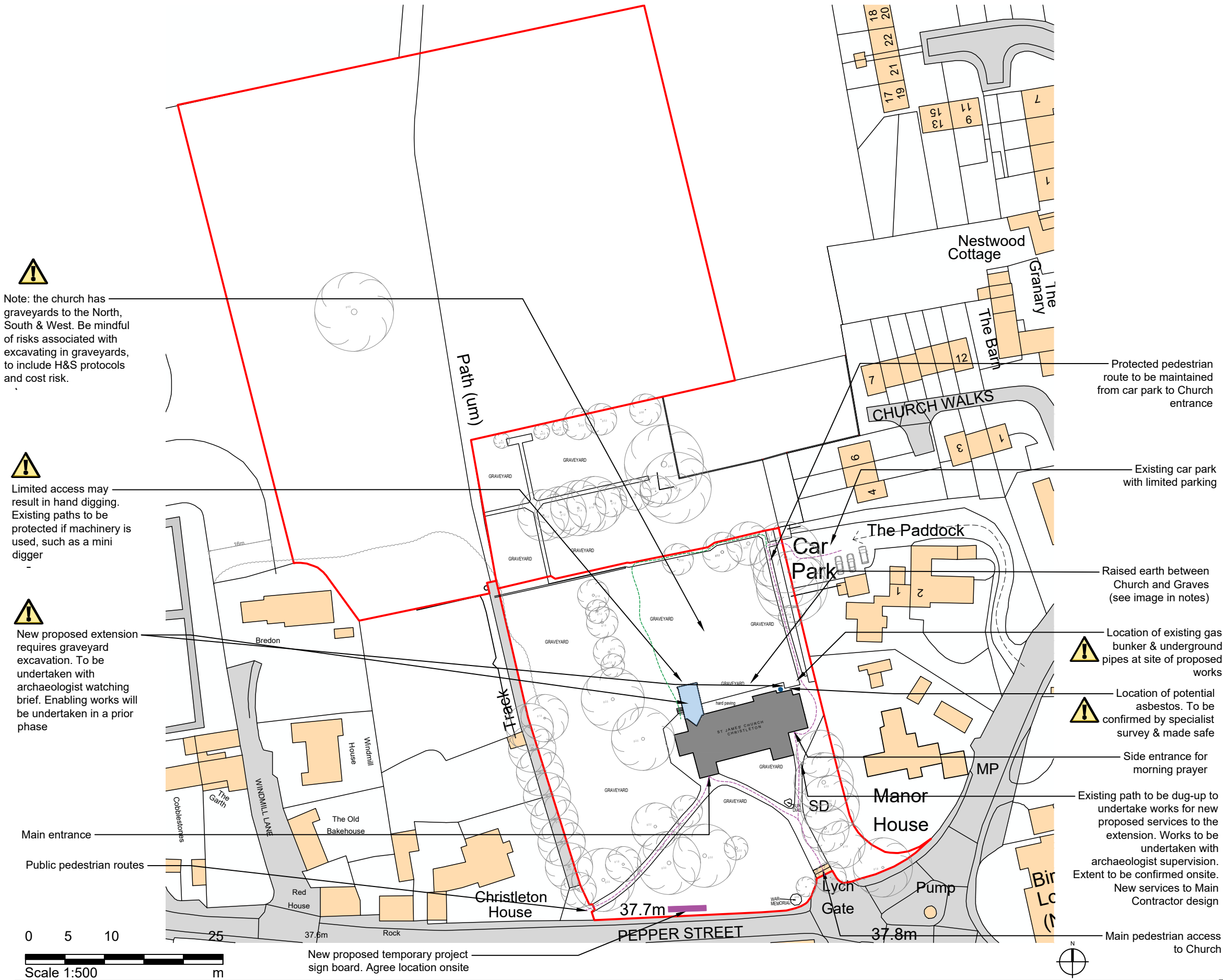


- Overview of Proposed Works:
1. New extension to North Elevation & associated works
 2. New meeting room enclosure
 3. Existing hard paving to broken-out and replaced with permeable paving (sudstech or similar approved) to improve drainage & install new services routes to extension. New soft edge to gravel at church perimeter. New associated landscaping to marry into the existing landscaping level.
 4. New internal ramp for increased accessibility to Lady Chapel
 5. Drop level & make good during new RWP drain installation
 6. Upgrade of existing radiators
 7. Repair & redecoration of the existing cementitious render datum to the internal perimeter of the church
 8. Upgrade and repair of existing flooring
 9. New floorbox with electrical outlets for the tea and coffee servery (Moveable servery as supplied separately by the Church)
 10. Consolidate existing pipework and re-route to suit new proposed works
 11. Re-set the retaining wall to missing sections along the graveyard. Fix relocated gravestones along the edge and reset existing wall to suit new path levels
 12. New emergency lighting to highlight route and relocated gravestones to retaining wall
 13. Area to be checked for asbestos and made safe as needed
 14. Path widened to accommodate universal access. Exact dimension to be confirmed onsite pending investigative works.
 15. Introduce a new step to suit path levels & reset existing stones

Notes		Drawing Status	
1.	Any dwg format drawing is to be read in conjunction with and at the scale of the accompanying pdf.	F	Feasibility
2.	Where colours other than black or grey are used, the drawing must be printed in colour.	S	Sketch Design
3.	For status 'C' (Construction) drawings all dimensions are to be checked on site by the contractor, scaling is for Local Authority purposes only.	P	Planning
4.	Unless otherwise indicated, all dimensions are in millimeters.	B	Building Control
5.	All information on this drawing is to be read in conjunction with the relevant Donald Insall Associates specification and trade contractors' drawings and information by specialists.	D	Developed Design
6.	In the event of any discrepancy, please contact us immediately.	M	Measurement
7.	This drawing may contain survey information by others and is to be used solely for the purposes for which it was issued.	T	Tender
8.	These are uncontrolled documents issued for information purposes only. If you have any queries regarding the drawings, please contact DIA immediately.	C	Construction
9.	Please note DIA cannot be held responsible for any errors arising from changes made to an uncontrolled dwg file.	R	Record
© 2019 DONALD INSALL ASSOCIATES LTD			

Rev		Date	Dwn	Auth	Revision
1	04-12-23	SRS	TB	Refer to drawing	
0	13-11-23	SRS	TB	Initial Issue	
Rev		Date	Dwn	Auth	Revision

Donald Insall Associates		Bridgegate House, 5 Bridge Place	
Chartered Architects and Historic Building Consultants		Chester CH1 1SA	
St. James' Church, Christleton		(+44) 01244 350 063	
		chester@insall-architects.co.uk	
Ground Floor Plan		Project	No
As Proposed		CD.STJC.04	2000
		Scale (A1)	Status
		1:50	4T
		Revision	
			1

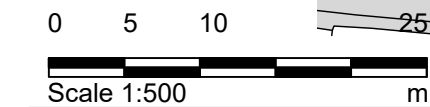


Note: the church has graveyards to the North, South & West. Be mindful of risks associated with excavating in graveyards, to include H&S protocols and cost risk.

Limited access may result in hand digging. Existing paths to be protected if machinery is used, such as a mini digger

New proposed extension requires graveyard excavation. To be undertaken with archaeologist watching brief. Enabling works will be undertaken in a prior phase

Main entrance
Public pedestrian routes



New proposed temporary project sign board. Agree location onsite

Protected pedestrian route to be maintained from car park to Church entrance

Existing car park with limited parking

Raised earth between Church and Graves (see image in notes)

Location of existing gas bunker & underground pipes at site of proposed works

Location of potential asbestos. To be confirmed by specialist survey & made safe

Side entrance for morning prayer

Existing path to be dug-up to undertake works for new proposed services to the extension. Works to be undertaken with archaeologist supervision. Extent to be confirmed onsite. New services to Main Contractor design

Main pedestrian access to Church

Notes

TO BE READ IN CONJUNCTION WITH SPECIFICATION

Hatch Key:

- (Light Blue) - New proposed extension
- Pedestrian routes, to be protected and maintained where practicable
- Potential site access route, to be agreed with Contractor onsite
- Potential existing mains connection, confirm onsite

Location for site compound to be agreed onsite with Contractor and Client. This drawing is indicative only, to be confirmed onsite

Existing view at location of the proposed extension



Existing view from car park to the North Elevation



Existing view of the South Elevation

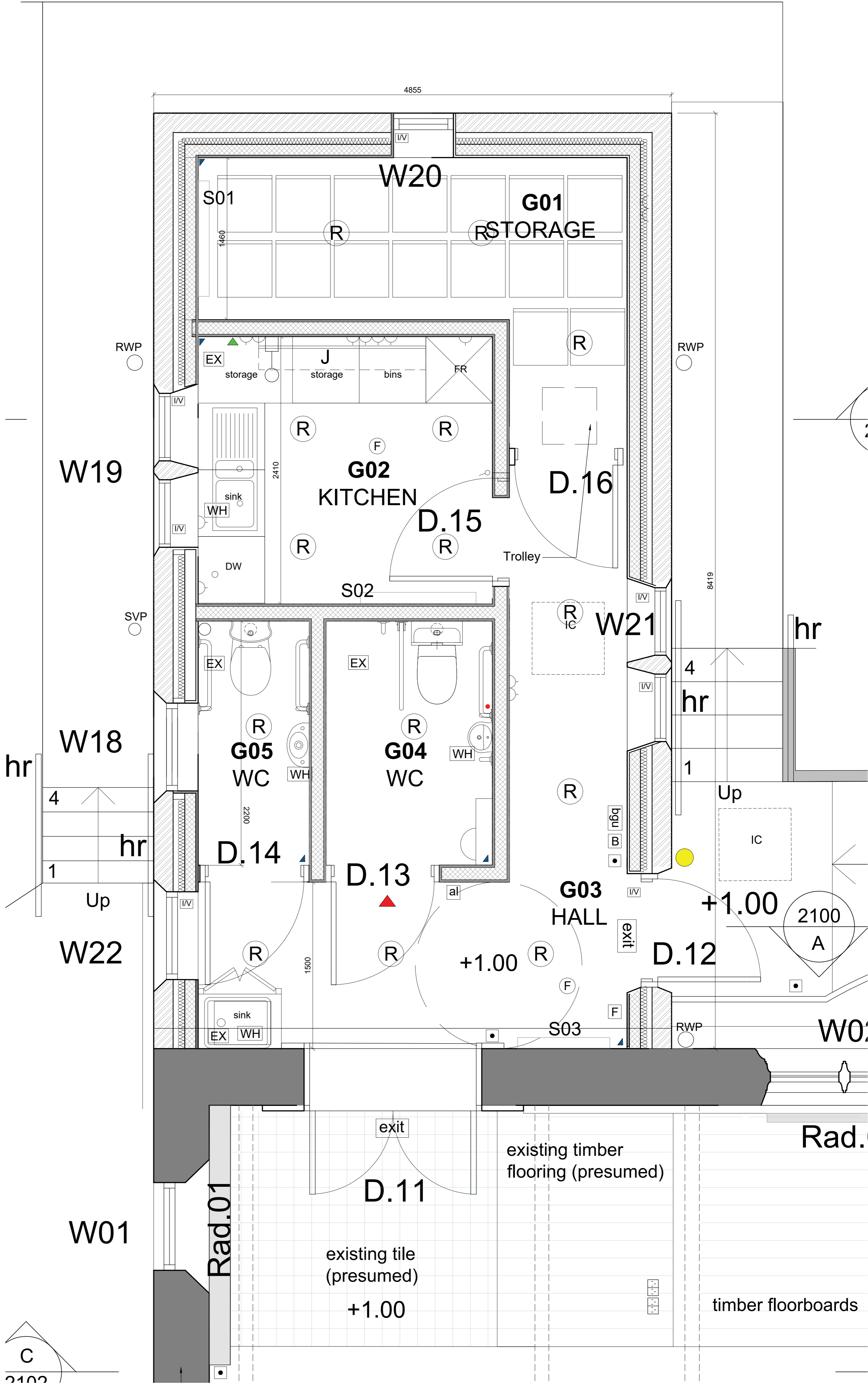


Notes	1. Any dwg format drawing is to be read in conjunction with and at the scale of the accompanying pdf.					Drawing Status																																																																																																																																																																																																																																																																																																																																																																																																																																																																																																																																																																																																																																																																																																																																																																																																																																																																																																																																																																																																																																																																																																																																																																																																																																																																																																																																																																																																					
-------	---	--	--	--	--	----------------	--	--	--	--	--	--	--	--	--	--	--	--	--	--	--	--	--	--	--	--	--	--	--	--	--	--	--	--	--	--	--	--	--	--	--	--	--	--	--	--	--	--	--	--	--	--	--	--	--	--	--	--	--	--	--	--	--	--	--	--	--	--	--	--	--	--	--	--	--	--	--	--	--	--	--	--	--	--	--	--	--	--	--	--	--	--	--	--	--	--	--	--	--	--	--	--	--	--	--	--	--	--	--	--	--	--	--	--	--	--	--	--	--	--	--	--	--	--	--	--	--	--	--	--	--	--	--	--	--	--	--	--	--	--	--	--	--	--	--	--	--	--	--	--	--	--	--	--	--	--	--	--	--	--	--	--	--	--	--	--	--	--	--	--	--	--	--	--	--	--	--	--	--	--	--	--	--	--	--	--	--	--	--	--	--	--	--	--	--	--	--	--	--	--	--	--	--	--	--	--	--	--	--	--	--	--	--	--	--	--	--	--	--	--	--	--	--	--	--	--	--	--	--	--	--	--	--	--	--	--	--	--	--	--	--	--	--	--	--	--	--	--	--	--	--	--	--	--	--	--	--	--	--	--	--	--	--	--	--	--	--	--	--	--	--	--	--	--	--	--	--	--	--	--	--	--	--	--	--	--	--	--	--	--	--	--	--	--	--	--	--	--	--	--	--	--	--	--	--	--	--	--	--	--	--	--	--	--	--	--	--	--	--	--	--	--	--	--	--	--	--	--	--	--	--	--	--	--	--	--	--	--	--	--	--	--	--	--	--	--	--	--	--	--	--	--	--	--	--	--	--	--	--	--	--	--	--	--	--	--	--	--	--	--	--	--	--	--	--	--	--	--	--	--	--	--	--	--	--	--	--	--	--	--	--	--	--	--	--	--	--	--	--	--	--	--	--	--	--	--	--	--	--	--	--	--	--	--	--	--	--	--	--	--	--	--	--	--	--	--	--	--	--	--	--	--	--	--	--	--	--	--	--	--	--	--	--	--	--	--	--	--	--	--	--	--	--	--	--	--	--	--	--	--	--	--	--	--	--	--	--	--	--	--	--	--	--	--	--	--	--	--	--	--	--	--	--	--	--	--	--	--	--	--	--	--	--	--	--	--	--	--	--	--	--	--	--	--	--	--	--	--	--	--	--	--	--	--	--	--	--	--	--	--	--	--	--	--	--	--	--	--	--	--	--	--	--	--	--	--	--	--	--	--	--	--	--	--	--	--	--	--	--	--	--	--	--	--	--	--	--	--	--	--	--	--	--	--	--	--	--	--	--	--	--	--	--	--	--	--	--	--	--	--	--	--	--	--	--	--	--	--	--	--	--	--	--	--	--	--	--	--	--	--	--	--	--	--	--	--	--	--	--	--	--	--	--	--	--	--	--	--	--	--	--	--	--	--	--	--	--	--	--	--	--	--	--	--	--	--	--	--	--	--	--	--	--	--	--	--	--	--	--	--	--	--	--	--	--	--	--	--	--	--	--	--	--	--	--	--	--	--	--	--	--	--	--	--	--	--	--	--	--	--	--	--	--	--	--	--	--	--	--	--	--	--	--	--	--	--	--	--	--	--	--	--	--	--	--	--	--	--	--	--	--	--	--	--	--	--	--	--	--	--	--	--	--	--	--	--	--	--	--	--	--	--	--	--	--	--	--	--	--	--	--	--	--	--	--	--	--	--	--	--	--	--	--	--	--	--	--	--	--	--	--	--	--	--	--	--	--	--	--	--	--	--	--	--	--	--	--	--	--	--	--	--	--	--	--	--	--	--	--	--	--	--	--	--	--	--	--	--	--	--	--	--	--	--	--	--	--	--	--	--	--	--	--	--	--	--	--	--	--	--	--	--	--	--	--	--	--	--	--	--	--	--	--	--	--	--	--	--	--	--	--	--	--	--	--	--	--	--	--	--	--	--	--	--	--	--	--	--	--	--	--	--	--	--	--	--	--	--	--	--	--	--	--	--	--	--	--	--	--	--	--	--	--	--	--	--	--	--	--	--	--	--	--	--	--	--	--	--	--	--	--	--	--	--	--	--	--	--	--	--	--	--	--	--	--	--	--	--	--	--	--	--	--	--	--	--	--	--	--	--	--	--	--	--	--	--	--	--	--	--	--	--	--	--	--	--	--	--	--	--	--	--	--	--	--	--	--	--	--	--	--	--	--	--	--	--	--	--	--	--	--	--	--	--	--	--	--	--	--	--	--	--	--	--	--	--	--	--	--	--	--	--	--	--	--	--	--	--	--	--	--	--	--	--	--	--	--	--	--	--	--	--	--	--	--	--	--	--	--	--	--	--	--	--	--	--	--	--	--	--	--	--	--	--	--	--	--	--	--	--	--	--	--	--	--	--	--	--	--	--	--	--	--	--	--	--	--	--	--	--	--	--	--	--	--	--	--	--	--	--	--	--	--	--	--	--	--	--	--	--	--	--	--	--	--	--	--	--	--	--	--	--	--	--	--	--	--	--	--	--	--	--	--	--	--	--	--	--	--	--	--	--	--	--	--	--	--	--	--	--	--	--	--	--	--	--	--	--	--	--	--	--	--	--	--	--	--	--	--	--	--	--	--	--	--	--	--	--	--	--	--	--	--	--	--	--	--	--	--	--	--	--	--	--	--	--	--	--	--	--	--	--	--	--	--	--	--	--	--	--	--	--	--	--	--	--	--	--	--	--	--	--	--	--	--	--	--	--	--	--	--	--	--	--	--	--	--	--	--	--	--	--	--	--	--	--	--	--	--	--	--	--	--	--	--	--	--	--	--	--	--	--	--	--	--	--	--	--	--	--	--	--	--	--	--	--	--	--	--	--	--	--	--	--	--	--	--	--	--	--	--	--	--	--	--	--	--	--	--	--	--	--	--	--	--	--	--	--	--	--	--	--	--	--	--	--	--	--	--	--	--	--	--	--	--	--	--	--	--	--	--	--	--	--	--	--	--	--	--	--	--	--	--	--	--	--	--	--	--	--	--	--	--	--	--	--	--	--	--	--	--	--	--	--	--	--	--	--	--	--	--	--	--	--	--	--	--	--	--	--	--	--	--	--	--

NOTES

This drawing is indicative only, all locations to be agreed onsite with the Architect.
All products to be installed to manufacturer's requirements.
Contractor to assess the existing electrical supply and propose a design to meet requirements.
All lights to be activated by motion sensor unless noted otherwise, PIR to be located onsite with Architect

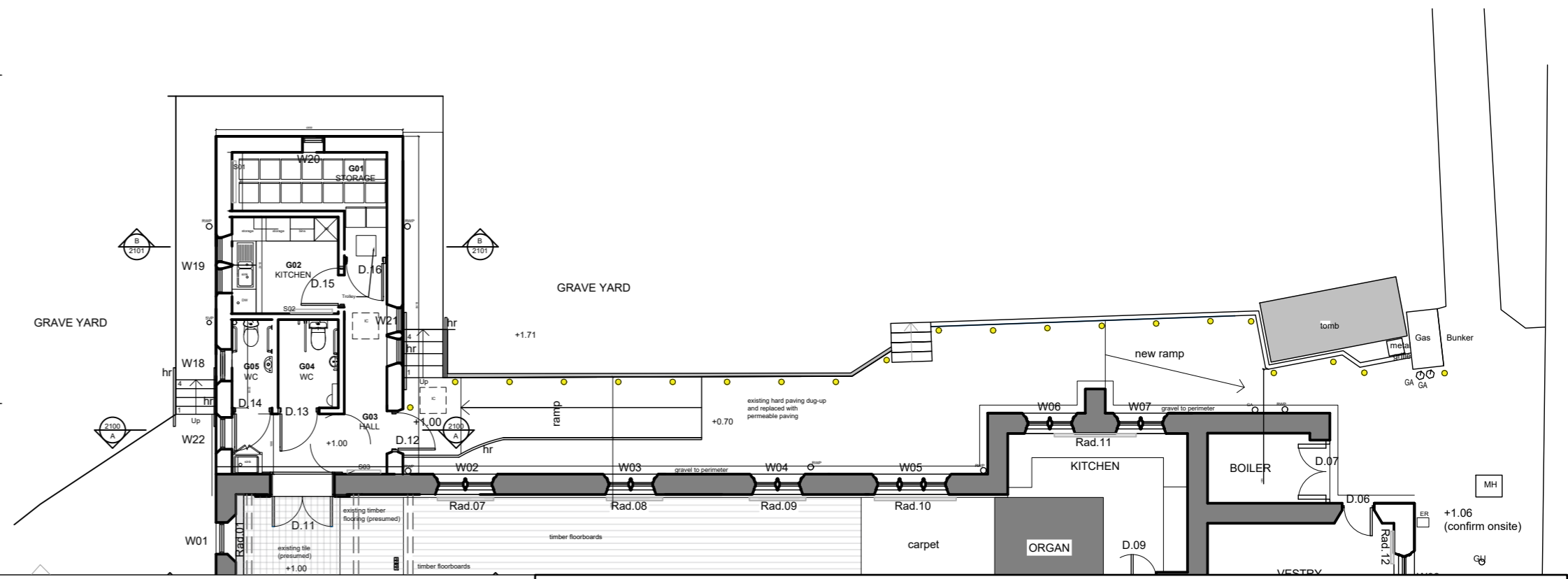
- SYMBOLS
- General**
Low-level outlet for appliance
Double Socket
Storage Heater & Electrical Outlet
Under-Sink Water Heater, to include spur/ electrical outlets
Push-Pad Access to D.11 & D.12
Extractor fan with 15minute over-run
Recessed spotlights & emergency lighting (activated by motion sensors)
Emergency Exit Sign
External Lighting (emergency lighting to photocell, motion sensor & back-up as required)
Under-cupboard strip lighting (activated by light switch)
Light Switch (for 'J' under cupboard lighting)
High-level electrical outlet for a fly-zapper
- Fire**
Break Glass Unit
Fire Detection
Fire Panel
- Universal Access WC**
Alarm pull cord
Alarm panel
Over-door alarm beacon
- Kitchen**
All kitchen appliances to have dedicated DP Switches, with name of appliance engraved onto switch
Dishwasher, to include associated outlets
Fridge, to include associated outlets
- Security**
Note: burglar alarm to connect to the existing
Inertia sensor to openings
PIR movement sensors to all rooms
Burglar alarm keypad



01 Part Plan - As Proposed
2002 1:20 @ A1

02 Part Plan - As Proposed
2002 n.t.s

Part - Plan Indicating the New Proposed
Emergency Lighting Route
Note: exact quantity of lighting to be confirmed with
supplier to meet regulations as required



Notes

- Any dwg format drawing is to be read in conjunction with and at the scale of the accompanying pdf.
- Where colours other than black or grey are used, the drawing must be plotted in colour.
- For status 'C' (Construction) drawings all dimensions are to be checked on site by the contractor, scaling is for Local Authority purposes only.
- Unless otherwise indicated, all dimensions are in millimeters.
- All information on this drawing is to be read in conjunction with the relevant Donald Insall Associates specification and trade contractors' drawings and information by specialists.
- In the event of any discrepancy, please contact us immediately.
- This drawing may contain survey information by others and is to be used solely for the purposes for which it was issued.
- These are uncontrolled documents issued for information purposes only. If you have any queries regarding the drawings, please contact DIA immediately.
- Please note DIA cannot be held responsible for any errors arising from changes made to an uncontrolled dwg file.

© 2019 DONALD INSALL ASSOCIATES LTD

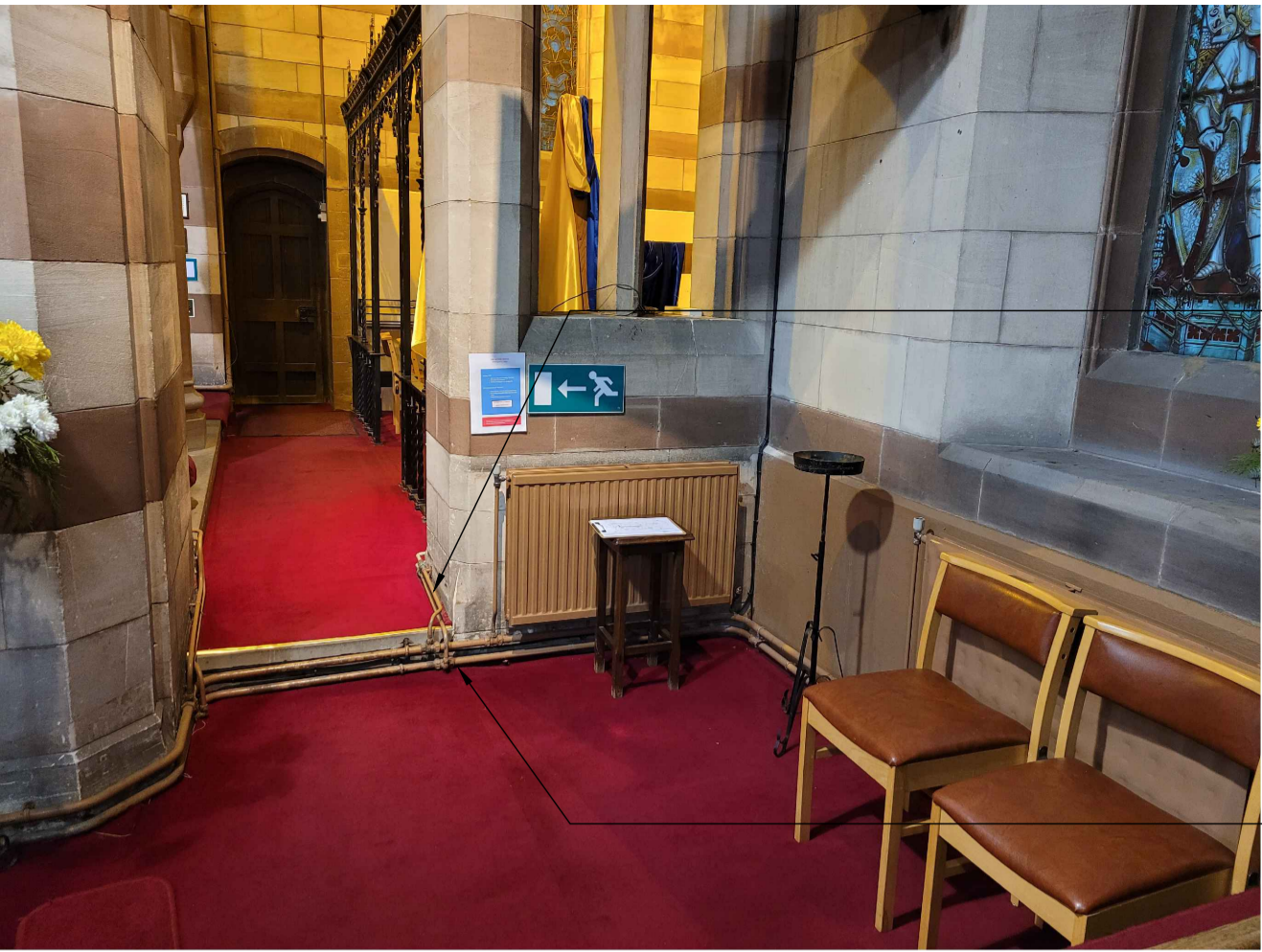
Drawing Status						
F	Feasibility					
S	Sketch Design					
P	Planning					
B	Building Control					
D	Developed Design					
M	Measurement					
T	Tender					
C	Construction					
R	Record					
1	04-12-23	SRS	TB	Refer to drawing		
0	13-11-23	SRS	TB	Initial Issue		
Rev	Date	Dwn	Auth	Revision		

Donald Insall Associates
Chartered Architects and Historic Building Consultants

Bridgegate House, 5 Bridge Place
Chester CH1 1SA
(+44) 01244 350 063
chester@insall-architects.co.uk

St. James' Church, Christleton

Project	CD.ST.JC.04	No	2002
Scale (A1)	1:20	Status	4T
		Revision	1



Existing pipework to be re-routed so that it does not impact on the clear width of this passage. Route to Contractor design, to be agreed with Architect onsite

Existing pipework to be consolidated
Remove redundant elements and
make-good affected areas. Re-route
elements that will obstruct new
interventions, routes to be approved
with Architect onsite. Confirm extent
onsite

Existing Condition

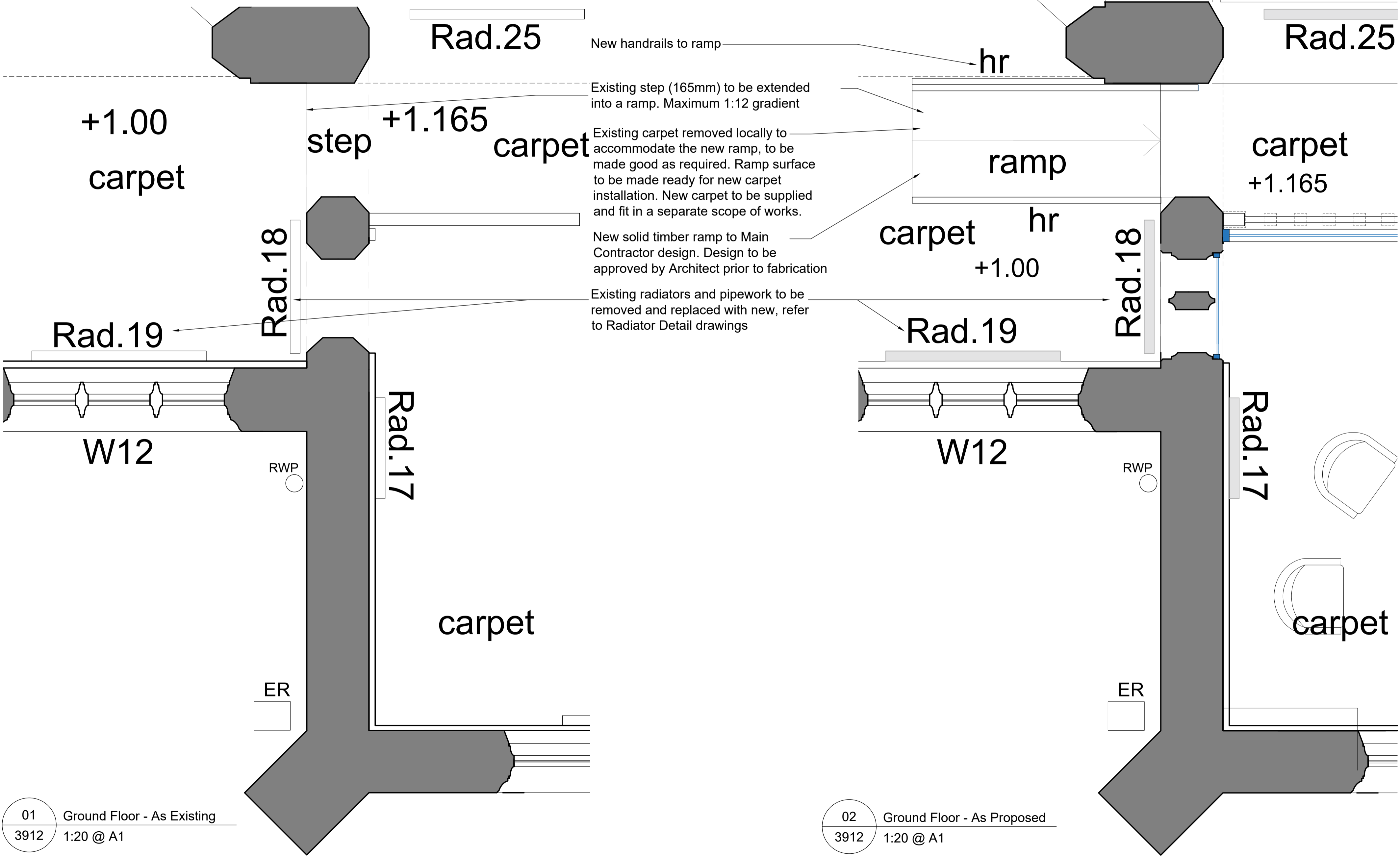
Ashlar sandstone wall
Note: fix into wall joints
where practicable

New galvanised & painted metal handrail to convex square edge flat 40mmx12mmx6mm. Colour to be confirmed. To be approved by Architect by shop drawing.

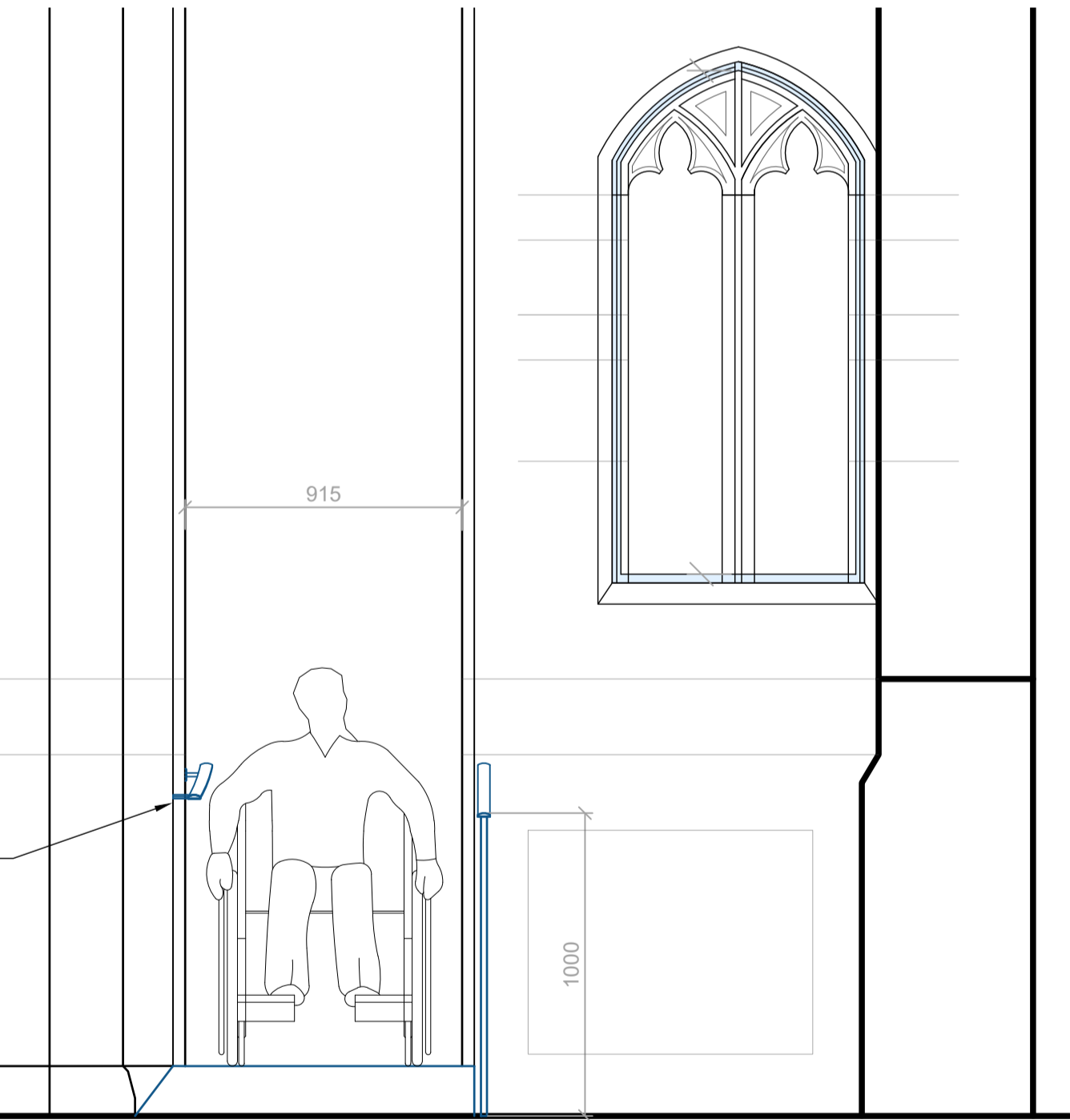
Wall-mounted handrail: —
Round bar welded to handrail
& resin fixed into wall.
Quantity of fixing points to
meet structural requirements

Handrail turned into
wall at end

04	Section - As Proposed
3912	1:5 @ A1



New handrails
to ramp as per
detail drawings



Notes

1. Any dwg format drawing is to be read in conjunction with and at the scale of the accompanying pdf.
2. Where colours other than black or grey are used, the drawing must be plotted in colour.
3. For status "C" (Construction) drawings all dimensions are to be checked on site by the contractor, scaling is for Local Authority purposes only.
4. Unless otherwise indicated, all dimensions are in millimeters.
5. All information on this drawing is to be read in conjunction with the relevant Donald Insall Associates specification and trade contractors' drawings and information by specialists.
6. In the event of any discrepancy, please contact us immediately.
7. This drawing may contain survey information by others and is to be used solely for the purposes for which it was issued.
8. These are uncontrolled documents issued for information purposes only. If you have any queries regarding the drawings, please contact DIA immediately.
9. Please note DIA cannot be held responsible for any errors arising from changes made to an uncontrolled dwg file.

© 2019 DONALD INSALL ASSOCIATES LTD

Drawing Status

F Feasibility

S Sketch Design

P Planning

B Building Control

D Developed Design

M Measurement

T Tender

C Construction

R Record

[illegible]

Donald Insall Associates
Chartered Architects and Historic Building Consultants

Bridgegate House, 5 Bridge Place
Chester CH1 1SA
(+44) 01244 350 063
chester@insall-architects.co.uk

St James' Church, Christleton

Meeting/Prayer Room
As Existing

Project
CD ST 10 04

3912

Scale (A1)

atus

510



Donald Insall Associates
Chartered Architects and Historic Building Consultants