

Supporting Documentation – HeatingLighting.pdf

Figure 1 shows the location of all radiators and lights in the church, transcribed onto the fire extinguisher map.

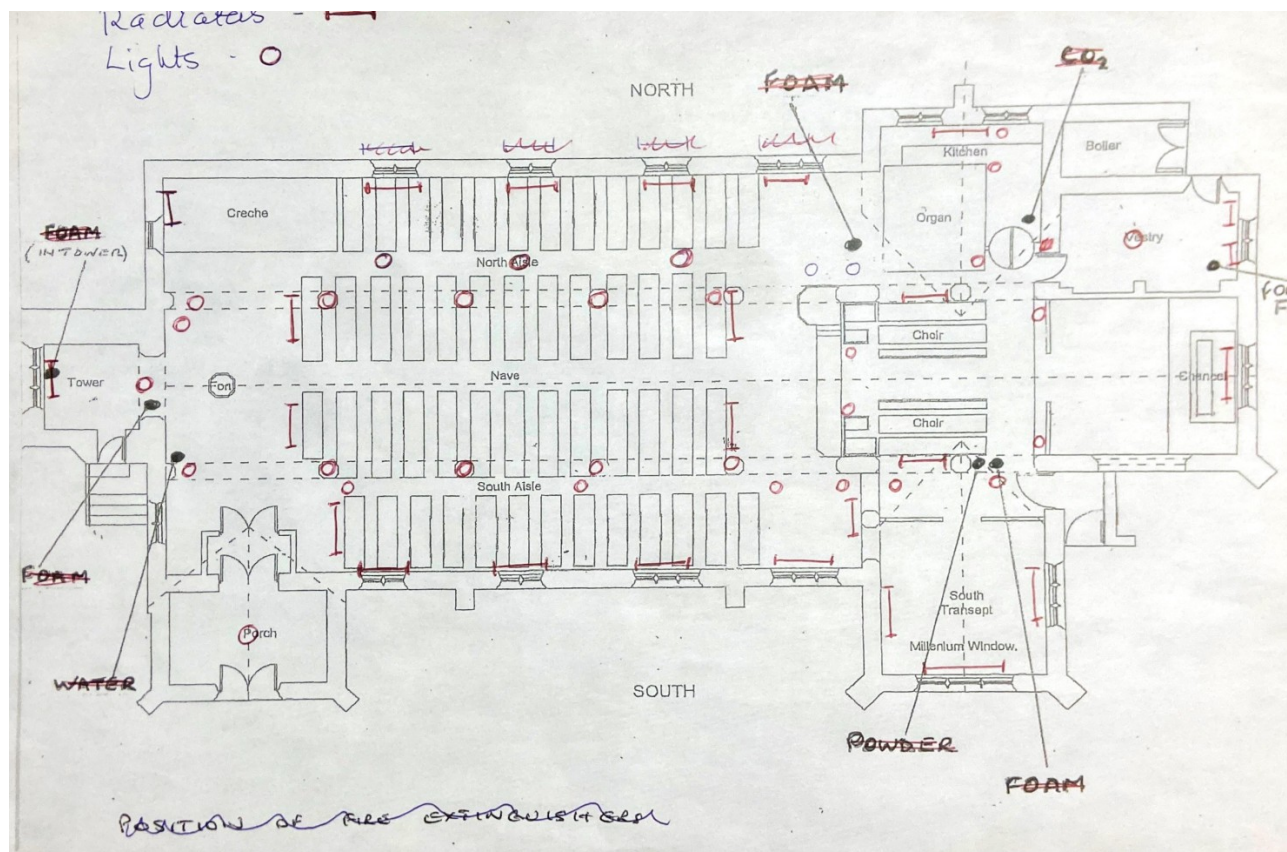


Figure 1: A diagram detailing the location of lights and radiators in the church.

The following note was supplied with the diagram:

- Lighting.** Electricity supplied by the main grid, Provider, Octopus.
 Main lights in Nave, further lighting to North and South Isles, Lady Chapel and kitchen area. Sanctuary and choir lit by high level lights. Lighting control board is at the rear of the church, kitchen from kitchen area, Lady Chapel, Sanctuary and Choir from switches at the rear door of Church. The main lighting was installed post WW2 possibly in the 1950s. There are external lights on the LychGate, front Porch and security light on rear door.
- Heating.** The Church is heated by gas. There are two boilers in an area attached to the Church. One is an auxiliary boiler in case one fails. There are multiple radiators in the Church including the Lady Chapel. The boiler was last replaced 7 years ago the radiators possibly date from the 1960s/1970s

It emphasises the location of the four central nave radiators would need to be considered if the pews are to be replaced in this area.