

Fig 1 The Royal Arms in 2021 Before Treatment.

Discoloured varnish obscured the painting so that the date 1727 and initials G R C at the top were barely visible and the shield's blazon and lettering were illegible.



Fig 2

July 2022 When the Royal Arms was taken down the north door recess was revealed.



Fig 3

General view of back of Arms



Fig 4

Fig 5

Details on the back recording the work carried out in 1969 and 1970

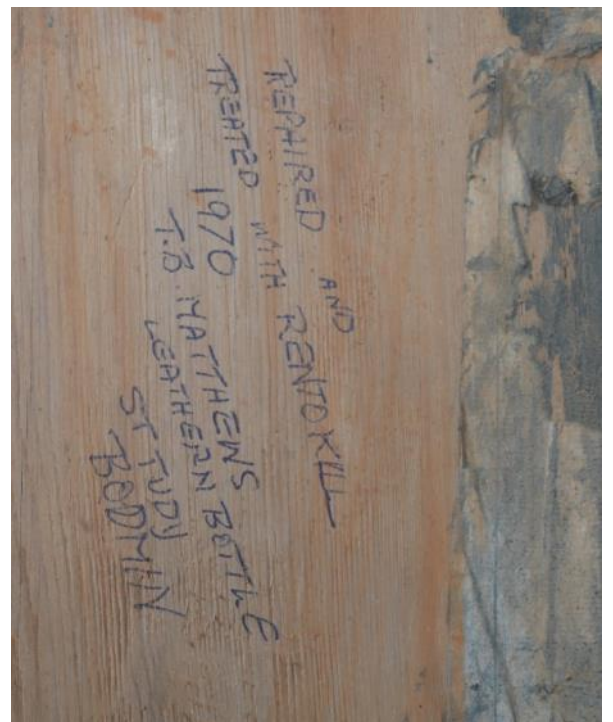


Fig 6

Mitre saw marks



Fig 7

Note, the edge of the painted frame is level with the back boards



Fig 8 There is no additional frame at the bottom of the boards so allowing good air flow behind.



Note, very limited old common furniture beetle infestation, also rusted nail heads. Note also close annual rings showing how slow grown the boards are.

Remains of cloth used to cover the wide gap between the boards.

Fig 9 Note construction of added box frame.



The nail heads were treated with anti corrosive sealant.

Fig 10

Note the air gap at the top of the pediment



Strips of dark cloth were applied in 2022 to cover the wide gaps between the boards.

Treatment next page

Before and During cleaning

Removal of discoloured varnish from board 1 revealed the painting with only traces of surviving colour in the background.

Fig 11



Fig 12 Board 1 with varnish removed



Fig 13

Initial test to remove discoloured varnish from the unicorn's leg.

Note there is no surviving paint in the background

Fig 14

Showing removal of the discoloured varnish



Note, there is no surviving paint in the background

Fig 15

The Supporters after cleaning

Fig 16

Note the broad brush strokes and use of yellow ochre rather than gold leaf for the lion, the crown and mantling.



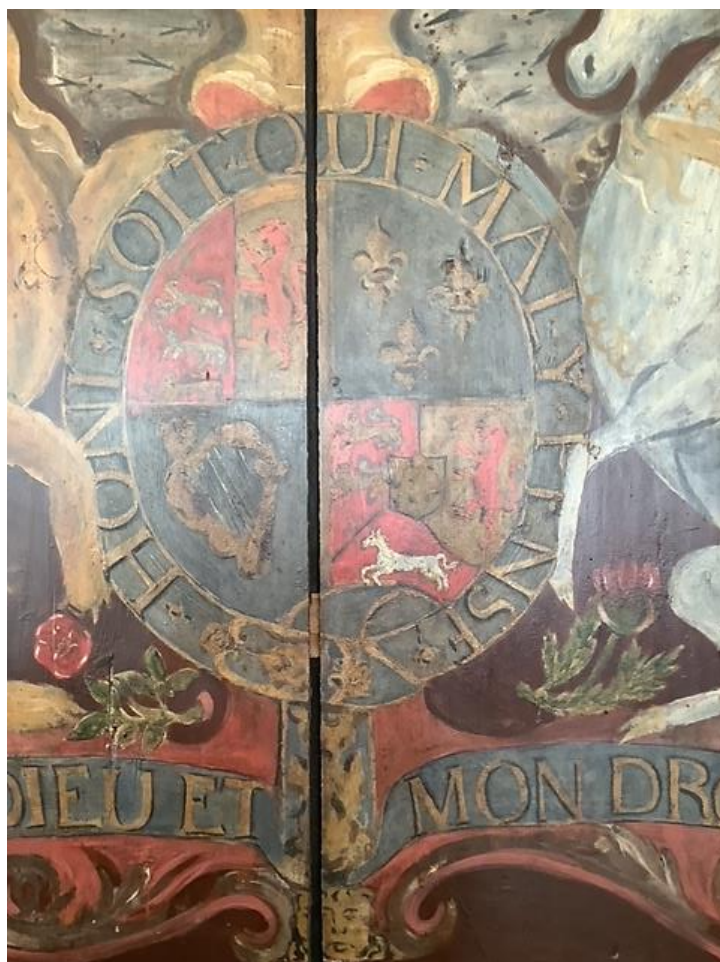
Fig 17

The Shield during cleaning

The white spots mark the locations where paint samples were taken.



Fig 18 After cleaning and reintegration.



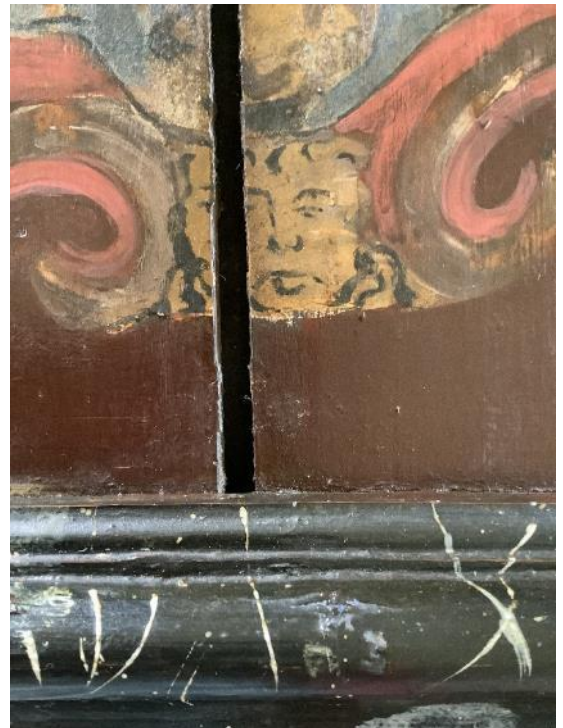
A dark brown glaze was applied to the background and a blue wash to degraded smalt. Missing elements, the flower of the thistle and rose were in-painted.

Structure showing the later box frame and battens added in 1970

Fig 19 Strips of dark cloth have been glued over the wide gap between the boards to disguise the space. All nail heads and screws were treated with anti corrosive sealant.



Fig 20



Completion next page

Completion**Fig 21**

The Arms and frame cleaned and conserved in the studio. A thin application of clear, removable Gamsol varnish has been applied to the surface of the painted boards and the frame, with a final application of microcrystalline wax.

**Fig 22**

Detail of the frame painted with distinctive fictive marble. White veins and swirls on black.

Fig 23 September 2022. The Royal Arms following treatment, returned to the north wall, positioned over the door recess.



Fig 24

