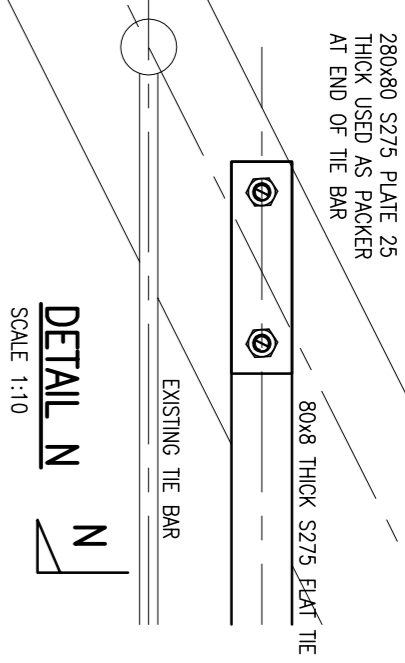
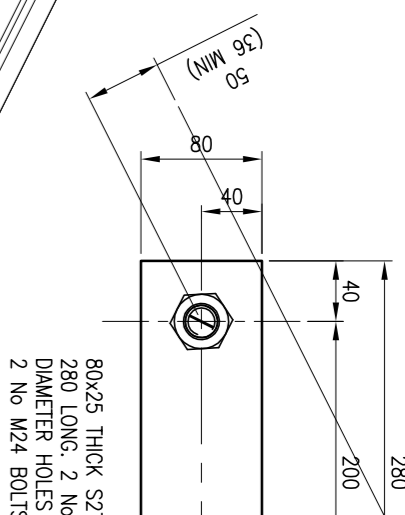


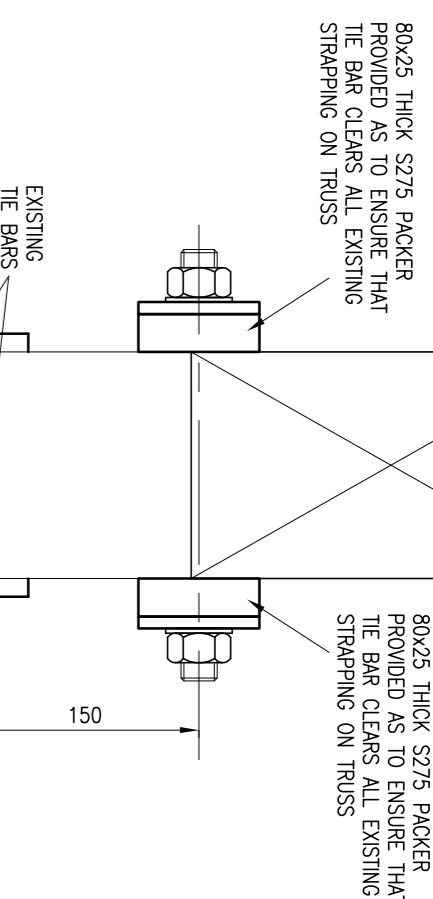
ELEVATION ON FRAMES  
MARK 01 AND MARK 01A  
SCALE 1:25



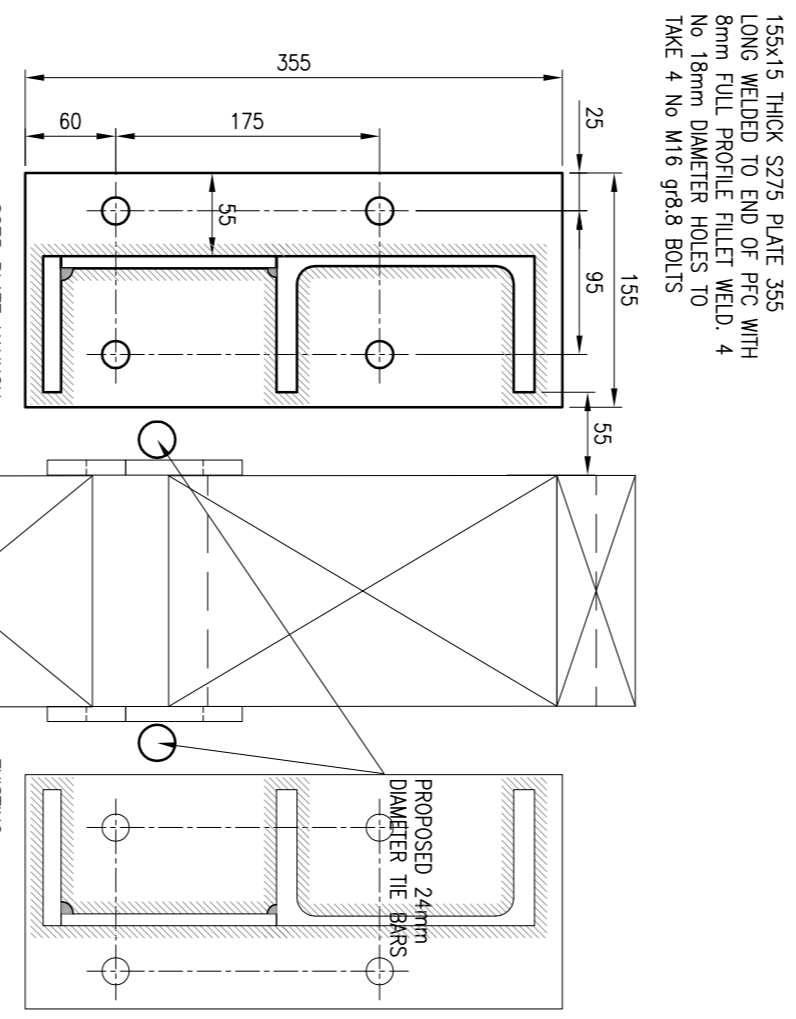
DETAIL N  
SCALE 1:10



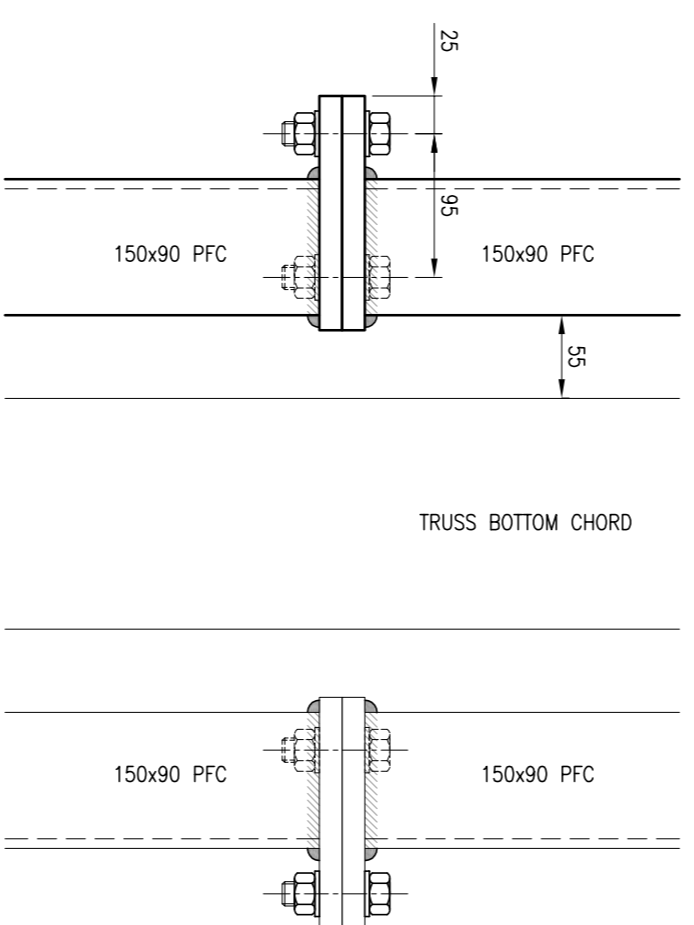
VIEW ON N-N  
SCALE 1:5



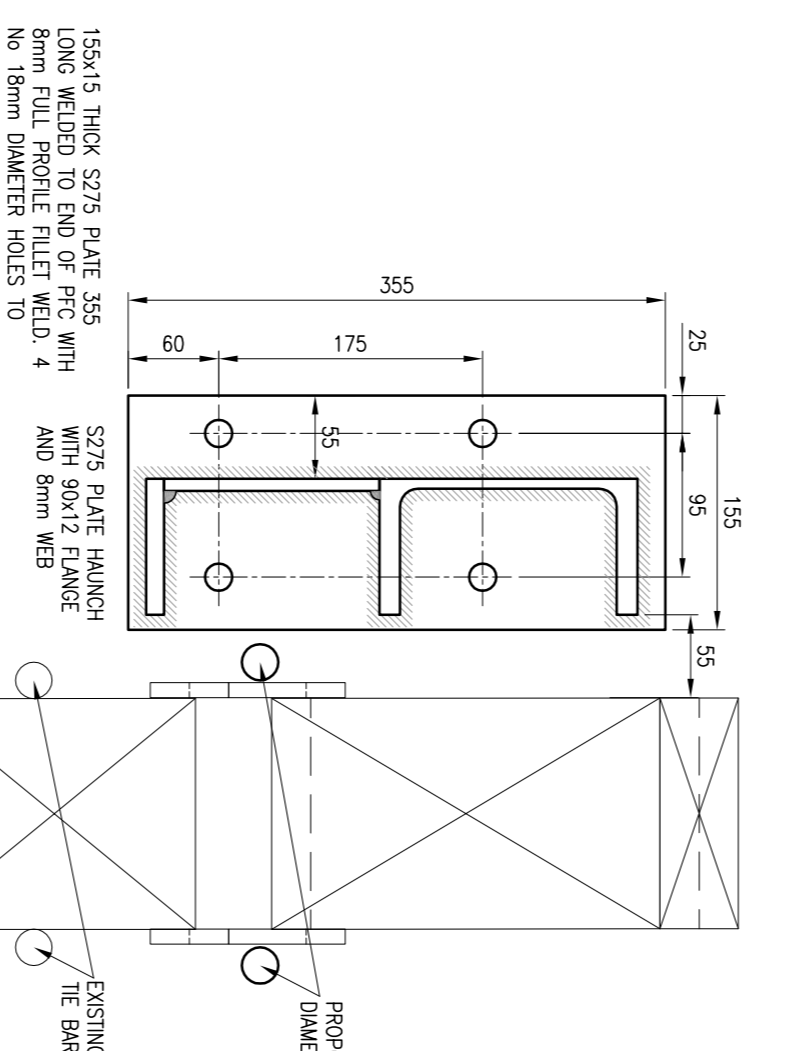
VIEW ON N-N  
SCALE 1:5



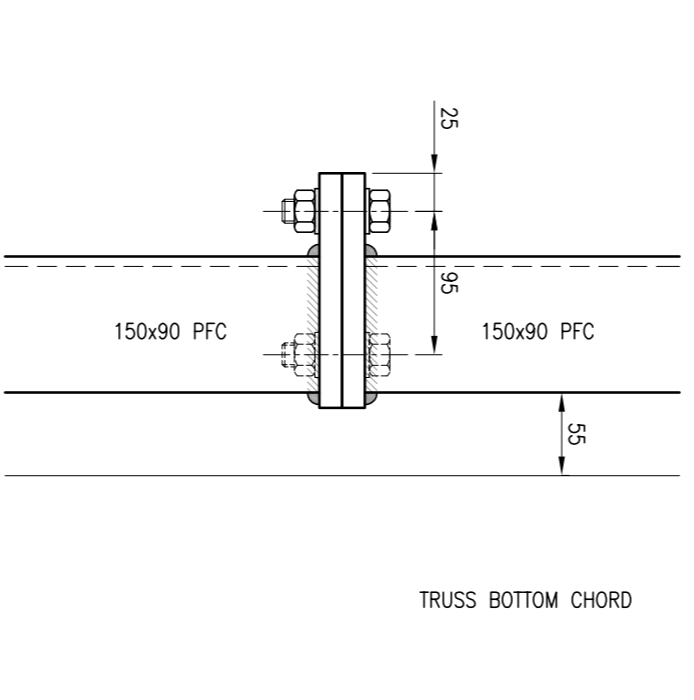
VIEW ON A-A DETAIL A FRAME 01  
SCALE 1:5



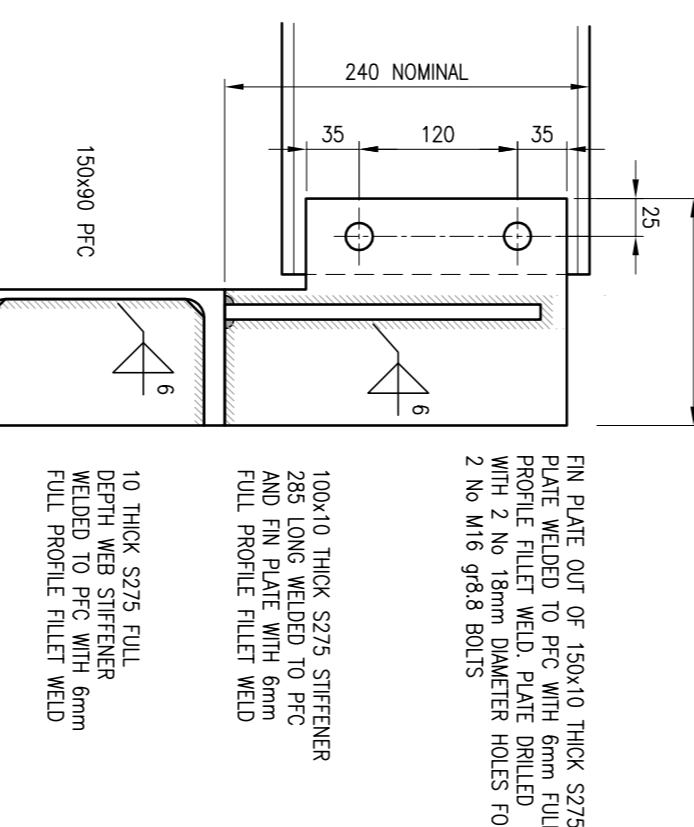
PLAN ON A-A DETAIL A FRAME 01  
SCALE 1:5



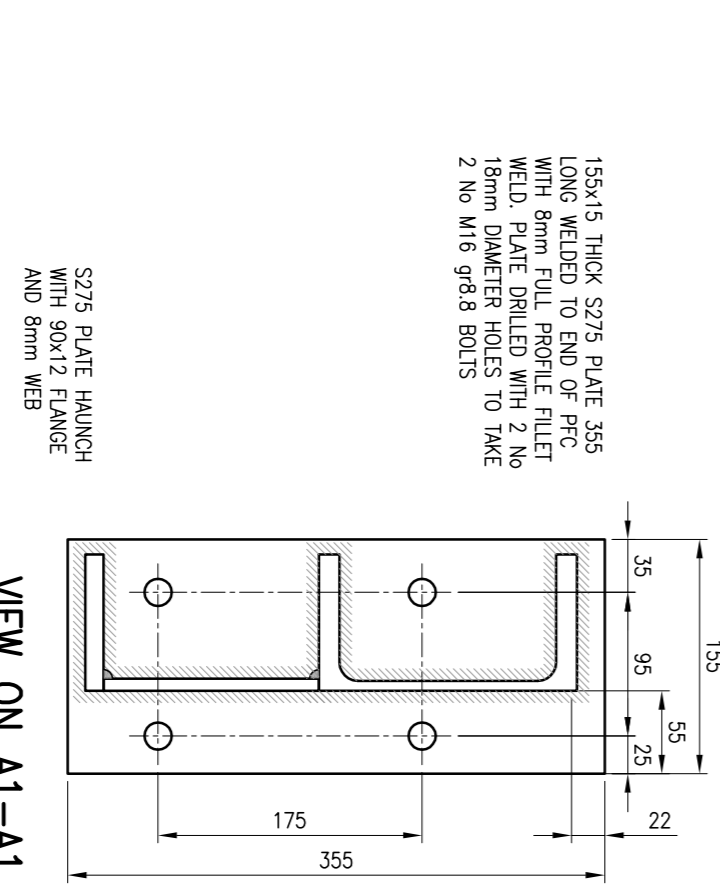
VIEW ON A-A DETAIL Aq FRAME 01A  
SCALE 1:5



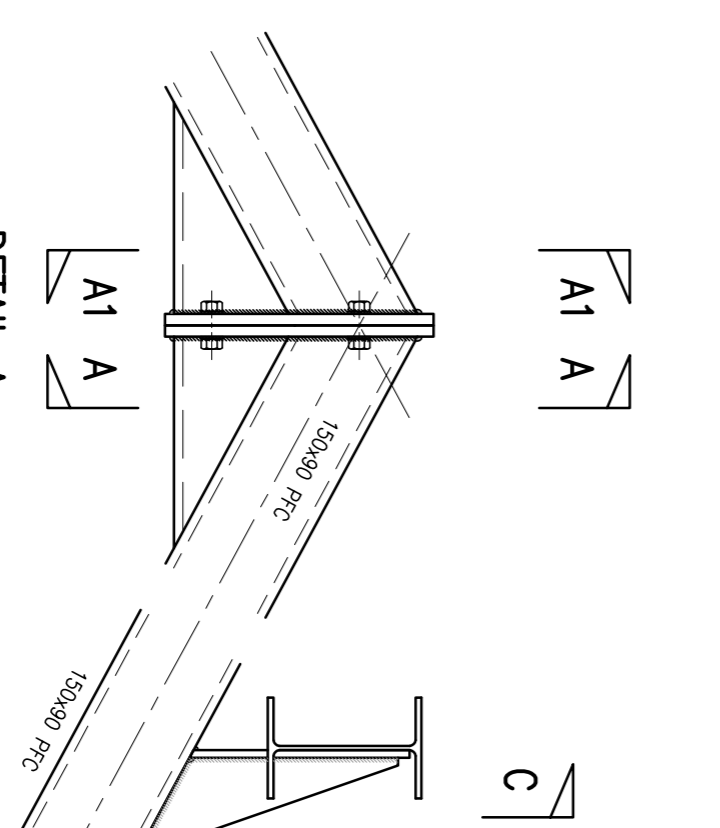
PLAN ON A-A DETAIL Aq FRAME 01A  
SCALE 1:5



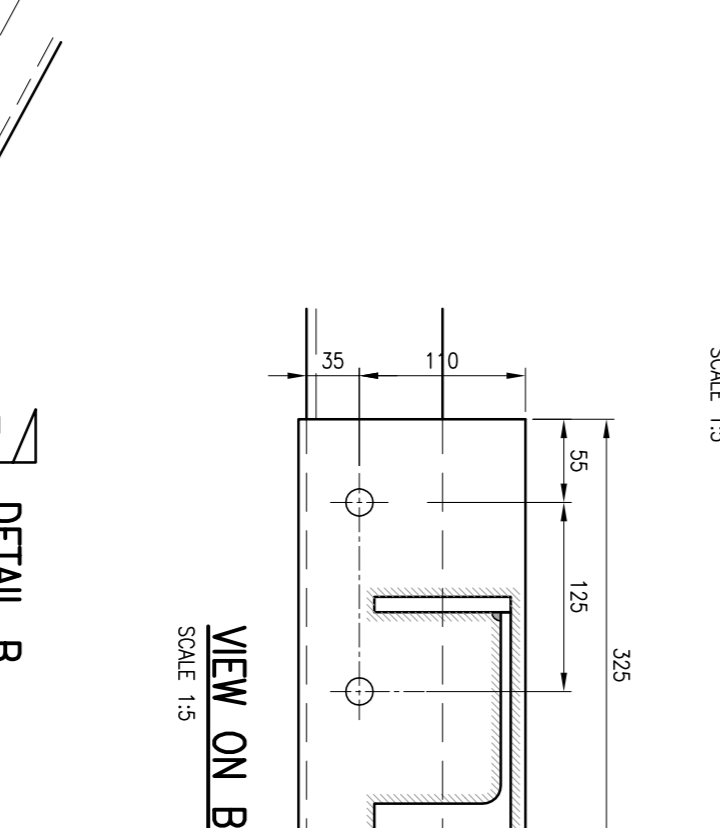
VIEW ON C-C  
SCALE 1:5



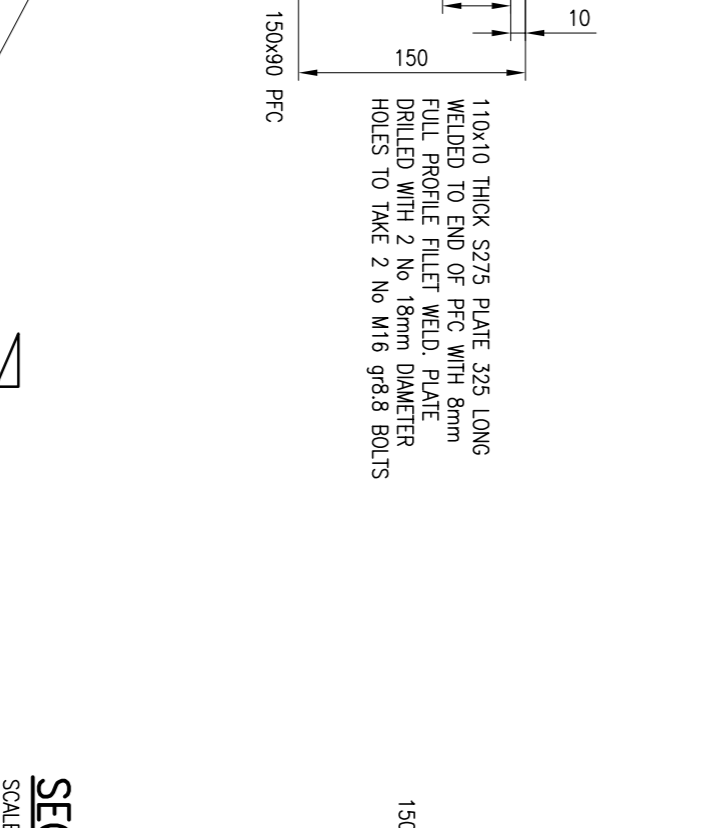
VIEW ON A1-A1  
SCALE 1:5



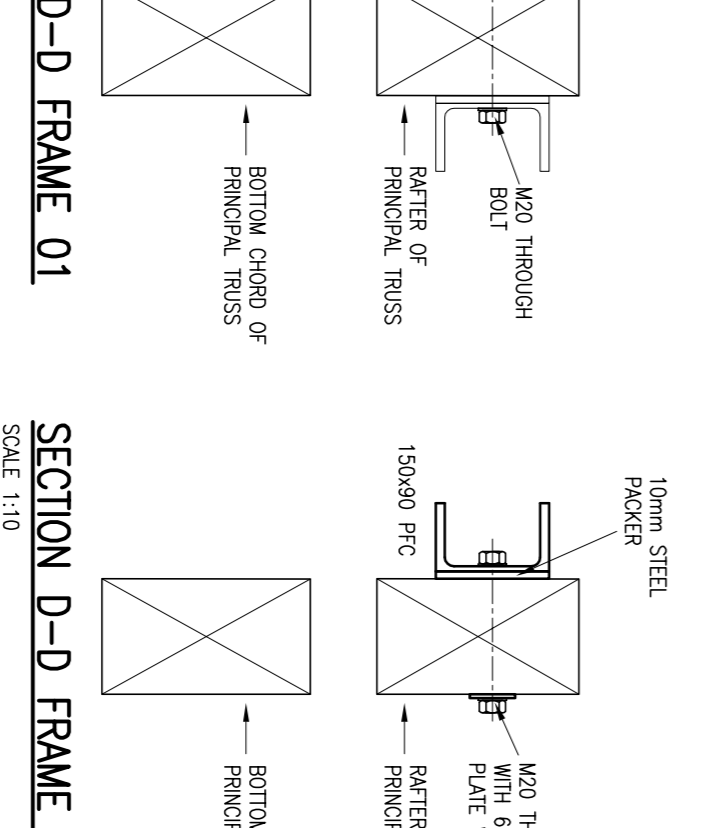
DETAIL A  
SCALE 1:10



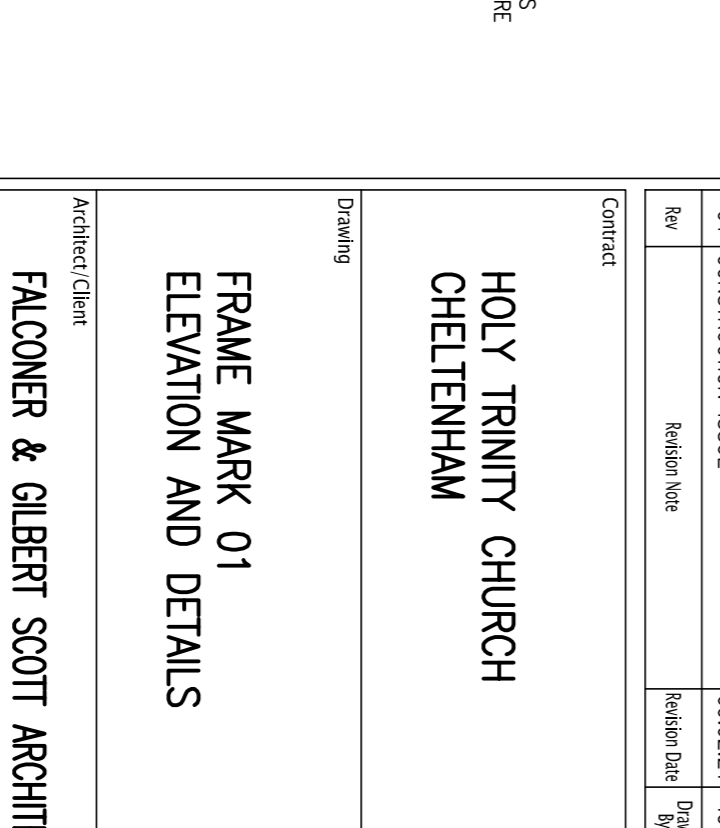
DETAIL B  
SCALE 1:10



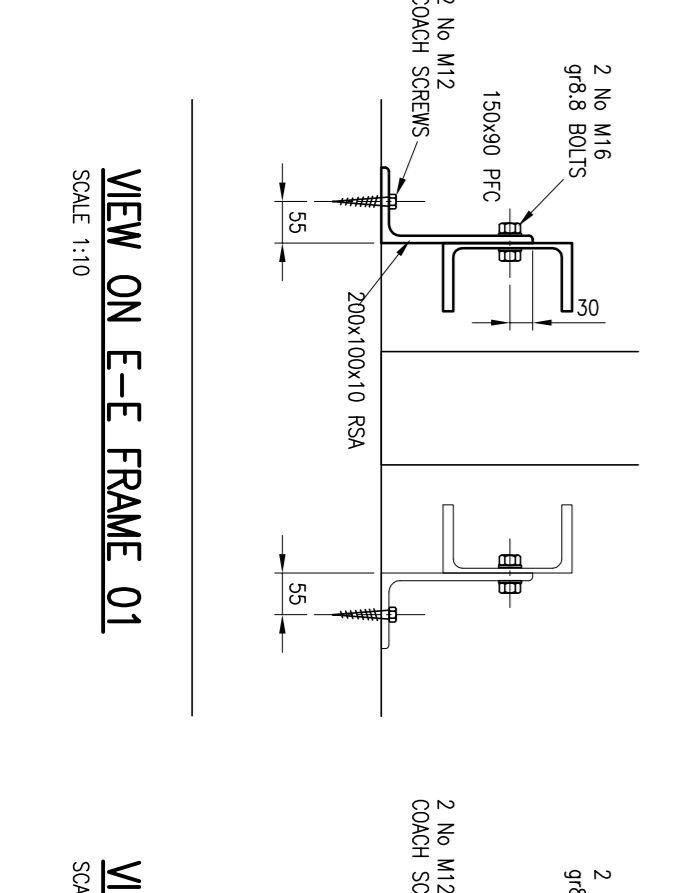
DETAIL C  
SCALE 1:10



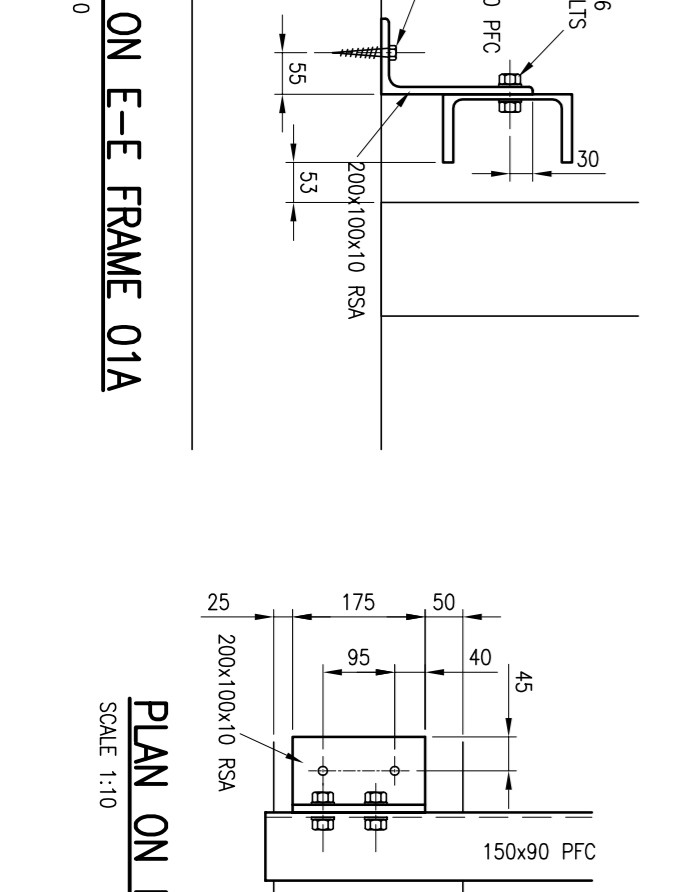
DETAIL D  
SCALE 1:5



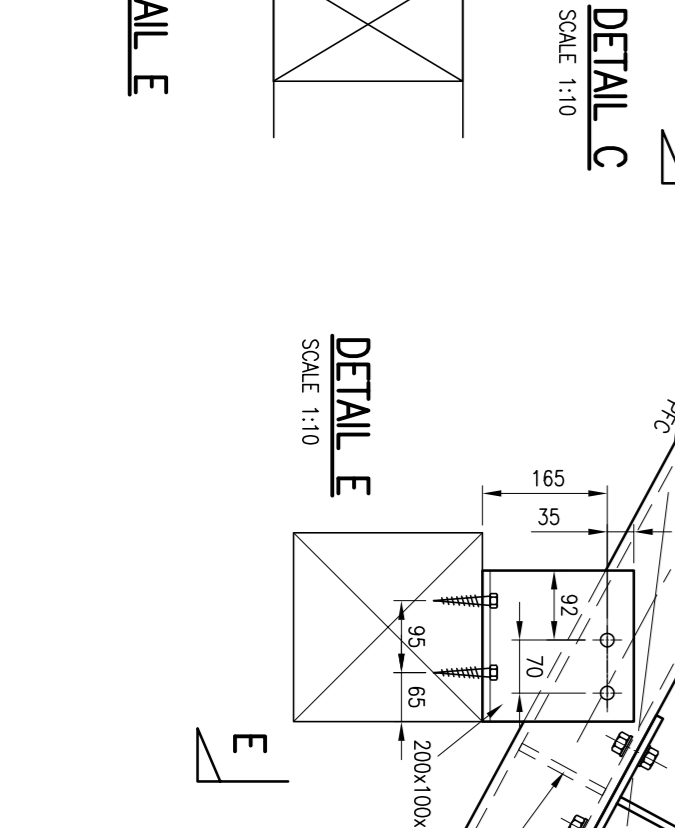
DETAIL E  
SCALE 1:5



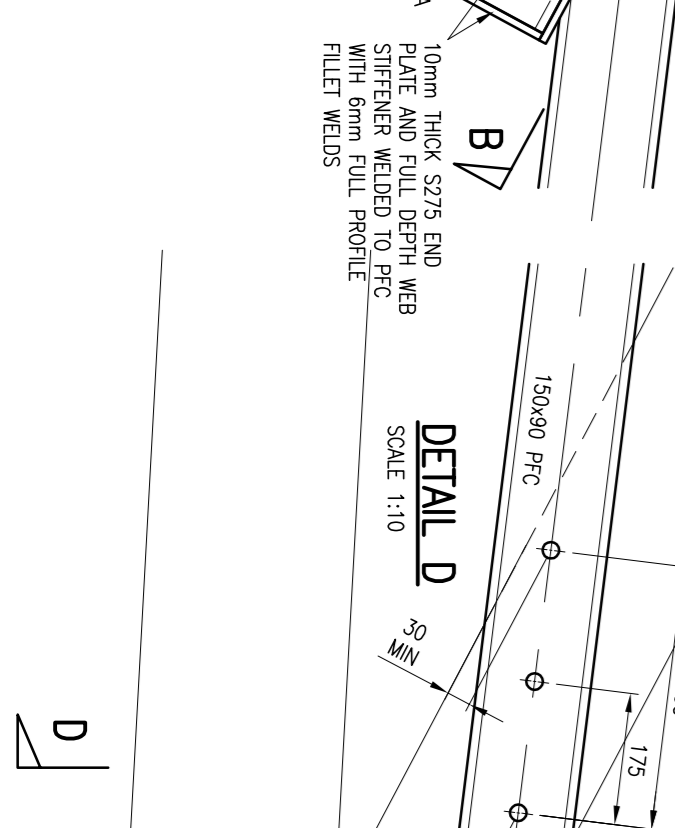
VIEW ON E-E FRAME 01  
SCALE 1:10



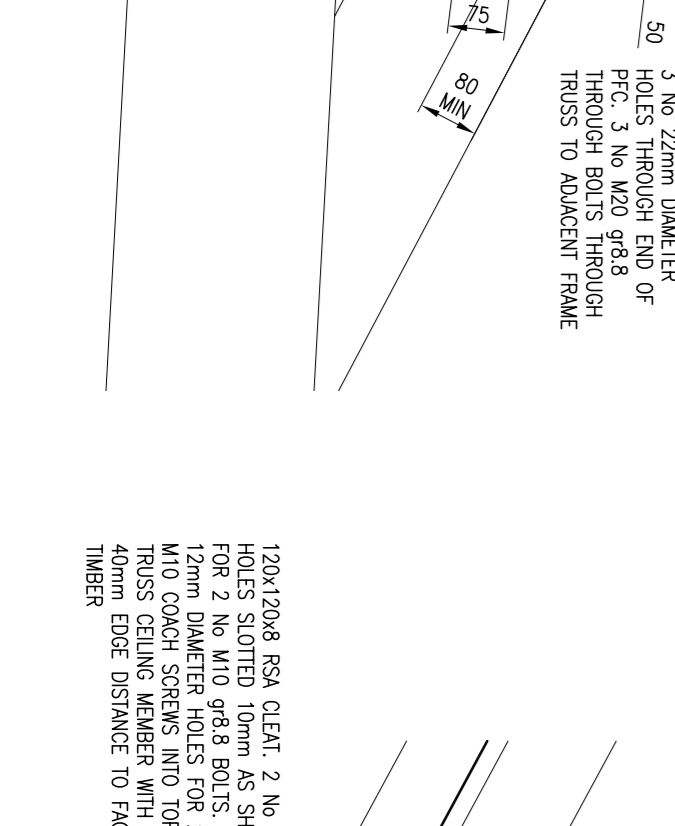
VIEW ON E-E FRAME 01A  
SCALE 1:10



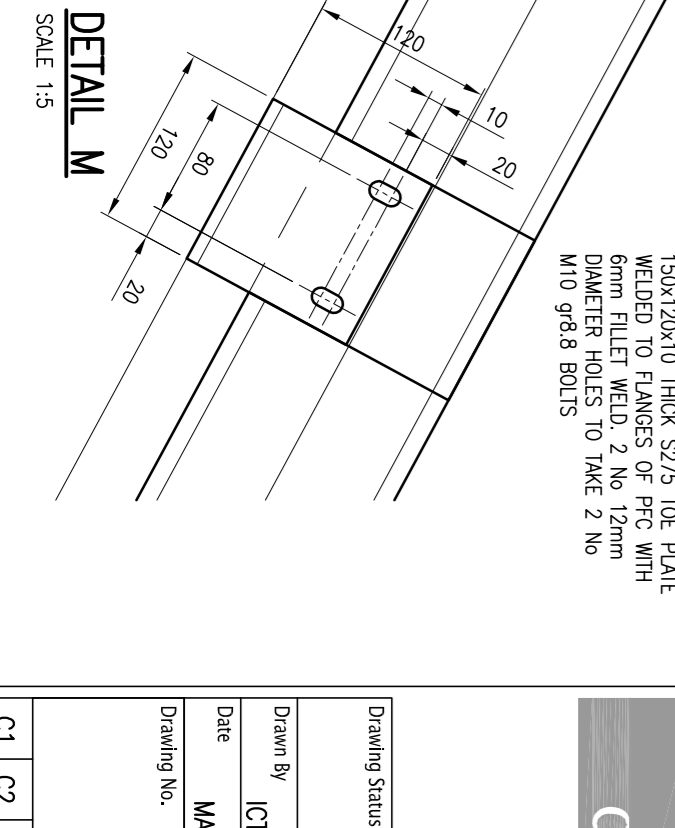
PLAN ON DETAIL E  
SCALE 1:10



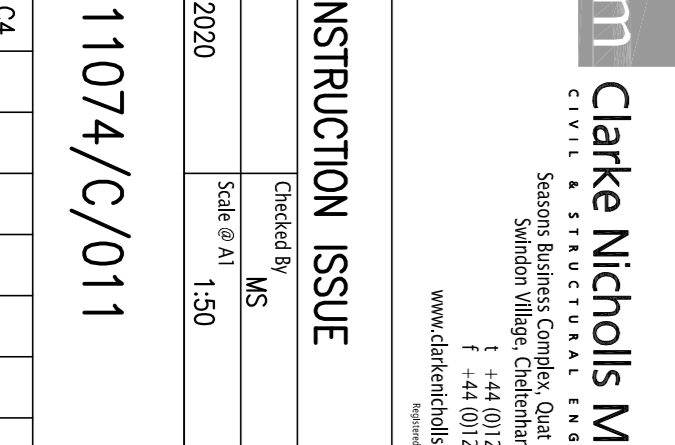
DETAIL F  
SCALE 1:10



DETAIL G  
SCALE 1:10



DETAIL H  
SCALE 1:5



DETAIL I  
SCALE 1:5

**HEALTH AND SAFETY/CIM**  
The contractor shall take full responsibility for the project, in line with 'Duty of Care' as defined by CDM Regulations and as set out in the design has been considered for foreseeable hazards and associated risks.  
H & S matters which have been identified as being significantly hazardous:  
However, these items should in no way be considered as a complete and final list. The contractor's normal H & S obligations still apply when undertaking constructional operations both on and off-site. This also applies to all works (Sub-contractors).  
GENERAL NOTES  
1. This drawing is to be read in conjunction with all relevant drawings, and all other drawings. Any discrepancies in relation to the above should be brought to the attention of the contract administrator by the contractor as soon as possible prior to construction.  
2. For the purposes of construction the drawing must not be scaled, and only written or calculated dimensions are to be used.  
3. ALL HOT ROLLED STEELWORK THOROUGHLY CLEANED AND DEGRADED PRIOR TO BLAST CLEANING TO SA2.1/2 AND SHOP PAINTED WITH 2 COATS HIGH BUILD ZINC PHOSPHATE PRIMER WITH A DFT OF 80 MICRONS TOUCHED UP ON SITE AS REQUIRED

Architect/Client  
**FALCONER & GILBERT SCOTT ARCHITECTS**  
TRINITY CHELTENHAM P.C.C.

**cmm** Clarke Nicholls Marcel  
Season Business Centre, Quat Grove Lane  
Sandton Village, Cheltenham GL51 9XK  
T: +44 (0)1242 528232  
F: +44 (0)1242 528233  
www.clarke-nicholls-marcel.com

Drawing Status  
**CONSTRUCTION ISSUE**

Drawn By: ICT  
Date: MARCH 2020  
Scale: As Shown  
Checked By: MS  
Scale: As Shown

Drawing No: 11074/C/011

© Clarke Nicholls Marcel Limited