

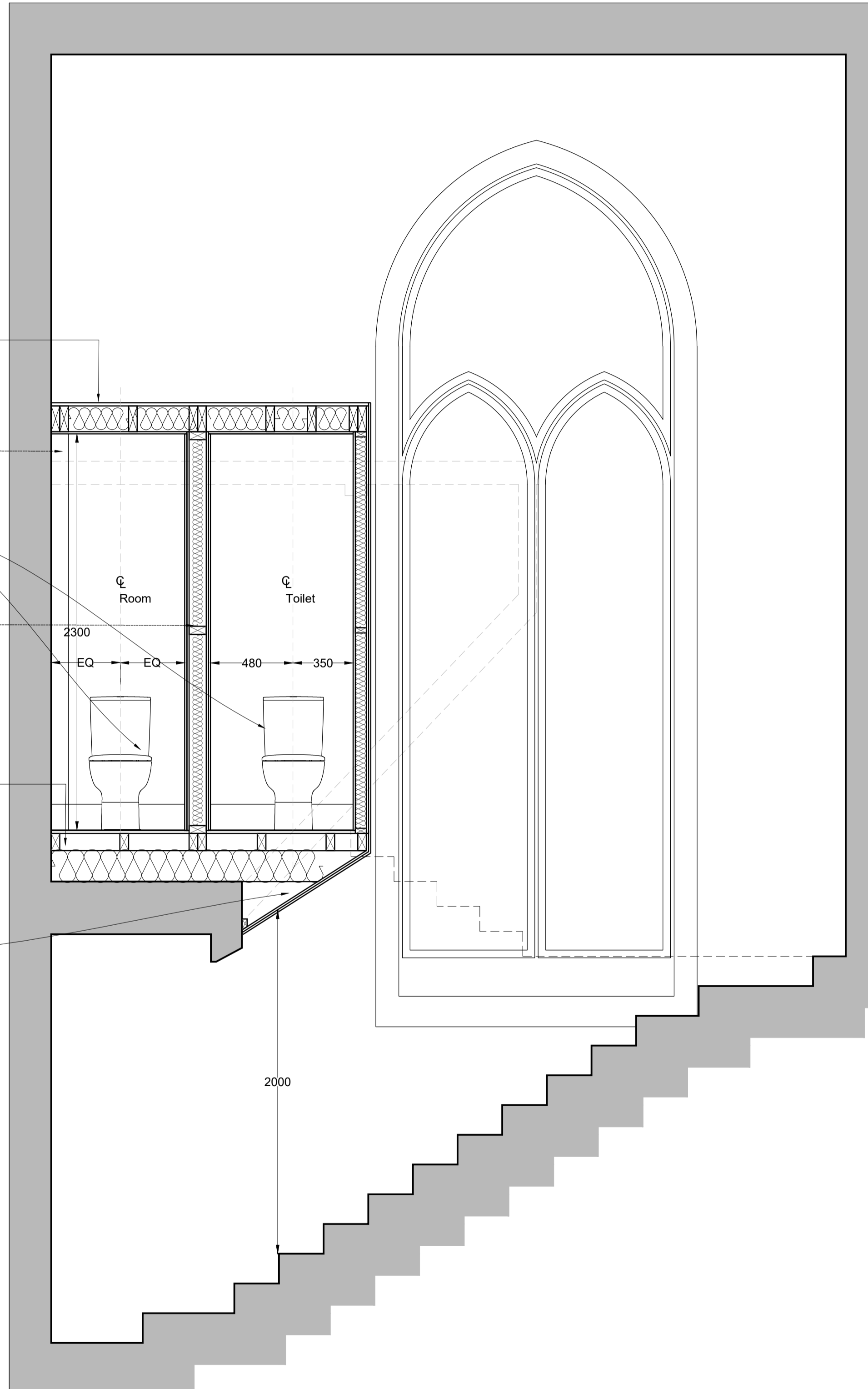
Ceiling build-up: 12.5mm moisture resistant plasterboard hung to 150x50mm joists at 400mm centres, with 100mm insulation between joists, 18mm T&G chipboard to top.

Box in existing SVP.  
Supply and fit new toilet pan Ideal Standard Concept Space Close Coupled WC Bowl E1205 with associated connections. Connect drainage to existing SVP within duct.

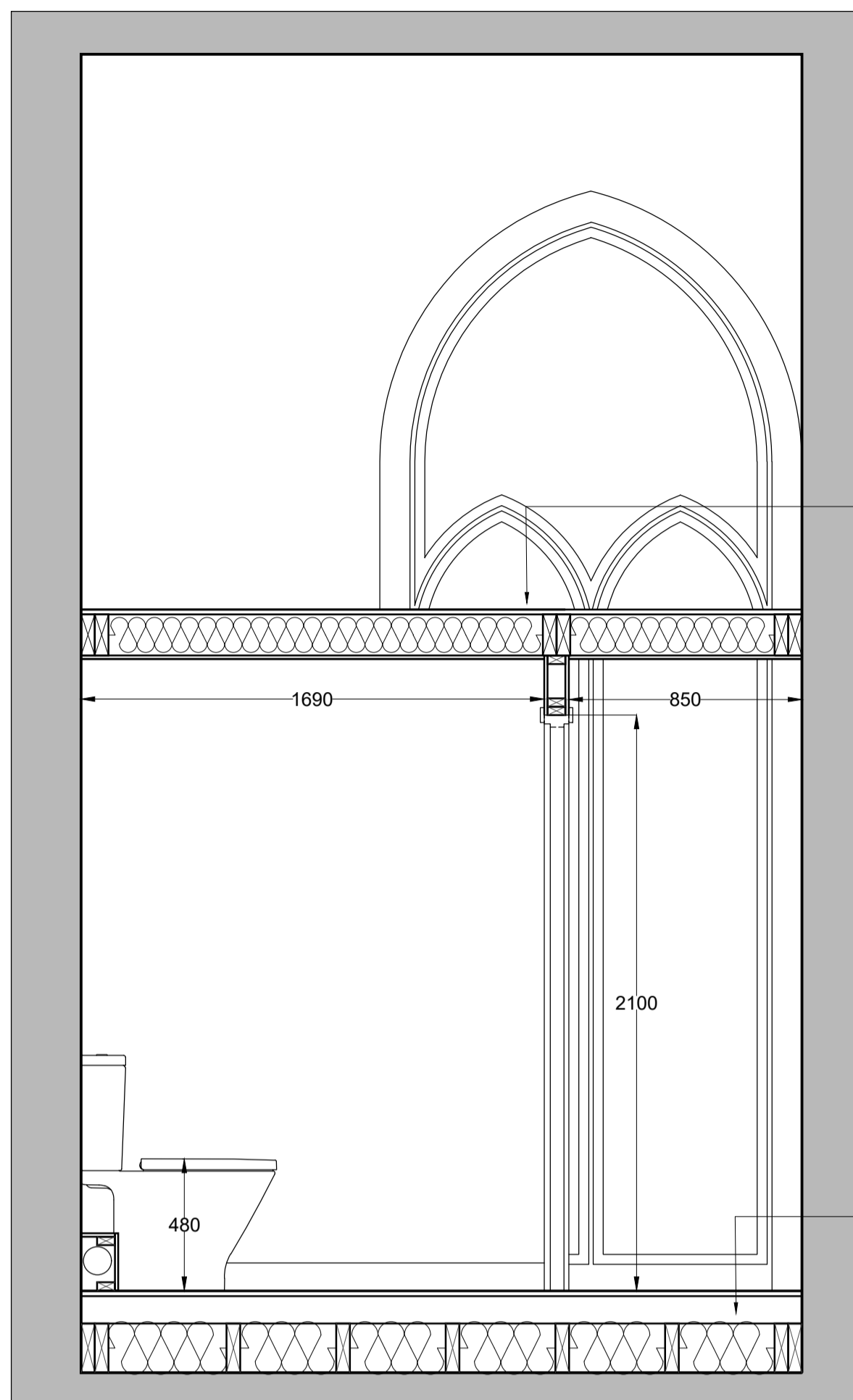
100x47mm timber studs laid at 400mm centres insulation in between, 12mm WBP Plywood, 12.5 moisture resistant plasterboard on either side.

Floor build-up: Linoleum floor finish over 18mm T&G floor, 100x50mm cross joists on 180 x 50mm joists at 400mm centres, with 100mm insulation between joists, all sitting on existing floor structure. New floor structure to cantilever over stairs, with joists strapped down at their West end to form cantilever.

Rebuild existing sloped ceiling, to maintain min. 2m headroom above stairs.



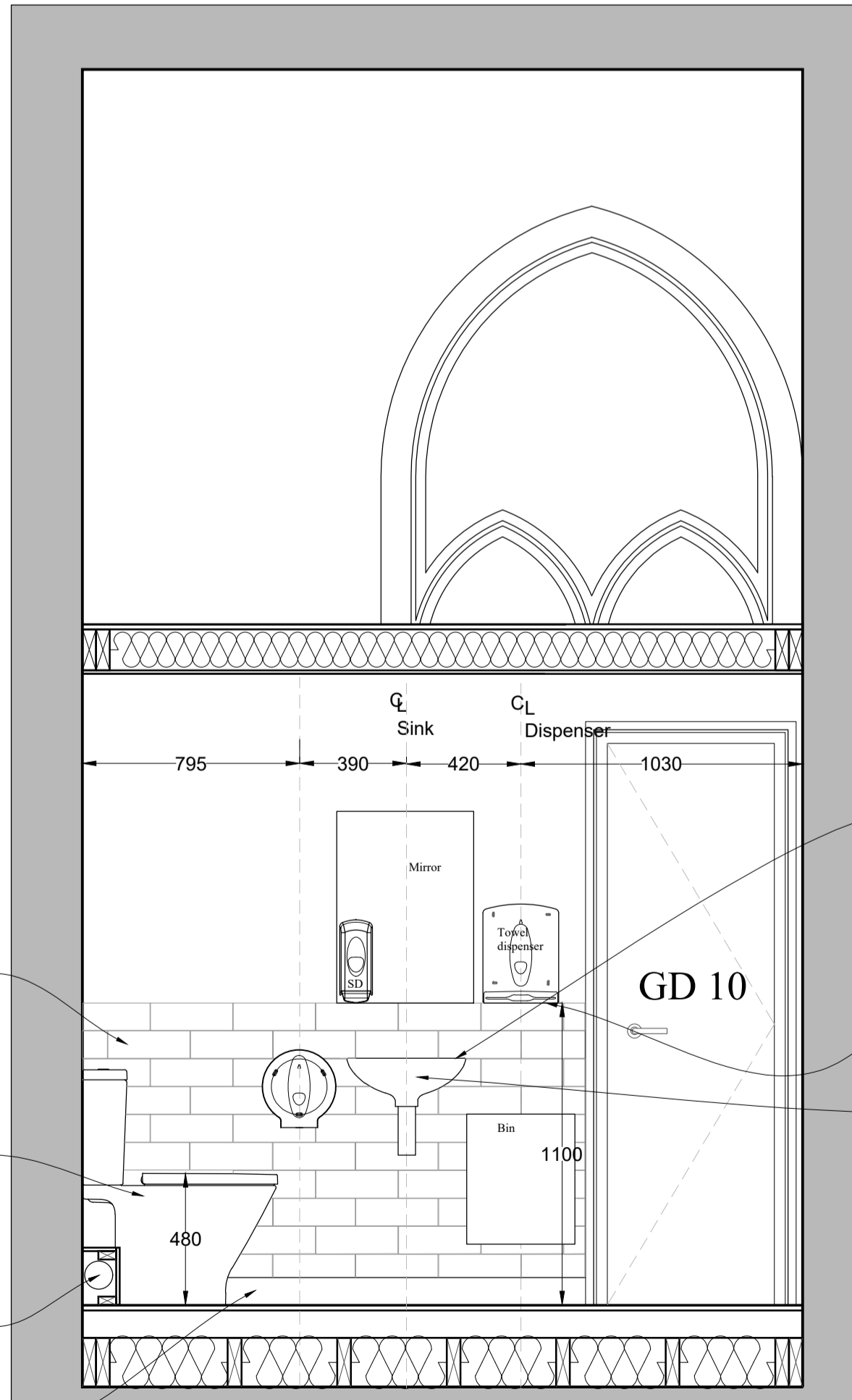
Mezzanine Section A'A  
1:20 As Proposed



Mezzanine Section B'B  
1:20 As Proposed

Ceiling build-up: 12.5mm plasterboard hung to 50x150mm joists at 400mm centres, with 100mm insulation between joists, 18mm T&G chipboard to top.

Floor build-up: Linoleum floor finish over 18mm T&G floor, 100x50mm cross joists on 180x50mm structural joists at 400mm centres, with 100mm insulation between joists, all sitting on existing floor structure.



Mezzanine Section C'C  
1:20 As Proposed

Half-tiled wall as splashback in both cubicles around the handbasin and dryer.

Supply and fit new toilet pan Ideal Standard Concept Space Close Coupled WC Bowl E1205 with associated connections. Connect drainage to existing SVP within duct.

Waste pipe to connect to existing drainage system. Plasterboard boxing for waste pipe.

Coved Linoleum skirting.

All water and waste water pipes to run in insulated cavity within studwork.

Paper towel dispenser with wall mounted bin below

Supply and fit new Ideal Standard Concept Arc 35cm wash hand basin (E7932(1)) with self closing thermostatic mixer tap. All pipes and drainage to run within the studwork.

Revision	Date	Comments
<b>DO NOT SCALE FROM THIS DRAWING</b>		

**TENDER**

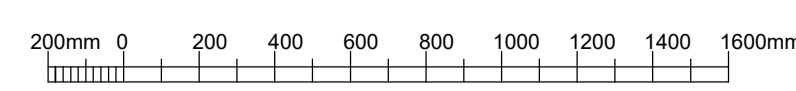
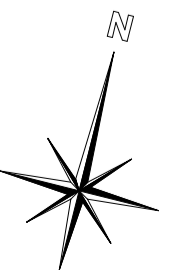
St. Nicholas Church Tooting  
Toilets Reordering  
Ground Floor & Mezzanine Part Plans & Section  
As Proposed

**CARDEN & GODFREY**  
Architects

Carden & Godfrey Limited  
33 Clerkenwell Close  
London EC1R 0AU  
Telephone: 020 7490 0300  
Facsimile: 020 7490 0804  
mail@cardenandgodfrey.co.uk

Scale	Size	Date	Drawn	No.	Rev.
1:20	A1	OCT.20	MS	7066.203	A

© Carden & Godfrey Ltd own the copyrights of this drawing and design which must not be reproduced in whole or part without the written permission of Carden & Godfrey Ltd



KEY

■ New Linoleum floor