

MINOR CONSERVATION REPORT  
FOR THE SOUTH AISLE STAINED GLASS WINDOW  
AT ST MICHAEL AND ALL ANGELS CHURCH, AVERHAM

Compiled by M .D.Stokes of MOS Stained Glass Ltd

15/05/2018

# MDS STAINED GLASS LTD

*Established 1985*

**Ecclesiastical & Architectural**

**Commissions . Conservation . Restoration . Renovation . Repairs**

THE MANOR BARN, 1 MANOR FARM RISE, WELLOW, NEWARK, NOTTS NG22 0ER  
Tel: 07912618332 E-mail: sales@mdsstainedglass.co.uk  
Website: www.mdstainedglass.co.uk

## **ST MICHAEL AND ALL ANGELS CHURCH, AVERHAM, NOTTS**

**South Aisle Stained Glass (Historic) window no: s6. Date of window, approximately 18<sup>th</sup> century.**

### **Observations**

Vandalism damage.

The pane measures 8.75"h x 7"w and portrays a biblical figure (with white beard and deep amber clothing) set in the landscape. This pane is painted, enameled and silver stained and is in a fragile state. Much of the smashed areas are missing. There are several existing cracks from vandalism impact. There is some paint pigment loss, quite normal for a painted pane of this age.

### **Conservation Report.**

To take photographic record before, during and after conservation.

To remove the existing fragments, inspect all areas around the window for shards, gather up all finds. Insert a matching replacement to the small amber damage and a pane of frosted glass to the larger pane, as a temporary infill. View the fragments on the light box at the studio, assembling the composition and re-use all original glass. Clean all original fragments and set aside for gluing. Then paint new infills to match the missing areas and edge-bond to the original fragments with Silcojet 153. Back plate the figurative pane with 2mm clear float (kiln fired) and seal around the edge with Silcojet 153. Reinstall this pane to the lead matrix. All newly fired painted infills to be initialed MDS and dated 2018.

### **Glass types.**

The blue sky fragment.  
2mm clear float glass.

Glass paints used: Rockingham Brown 3982 (50%) and Rockingham Tracing Black PT288 (50%) mix.

Enamel paints used: Rockingham Delft Blue PT136 and Blue/Green PT423 mix.  
Plus a 10% amount of Rockingham Ruby PT152.

The amber garment fragments.

Glass paints used: Rockingham Brown 3982 (50%) and Rockingham Tracing Black PT288 (50%) mix.

2.5mm amber glass  
Type: Tatra 106-1

Enamel paint used: Rockingham Rose Purple PT494

Director: Michael Stokes BA (Hons) AMGP Associate Member of the British Society of Master Glass Painters  
Associate Member of the Institute of Conservation. He is the Stained Glass Adviser to Sheffield Diocese.  
CSCS Cardholder- Heritage Skills Glazier. VAT Reg No: 610 6289 59 Company Number: 9235899

**Visit the website for latest news, conservation projects and new church window commissions**

MOS is currently on the PACR pathway towards gaining Accreditation

South Aisle Stained Glass conservation of one pane of historic glass. May 2018.  
Glass paint and enamels.  
Actual size.

Conservation diagram key.

Newly painted infills.....Wj

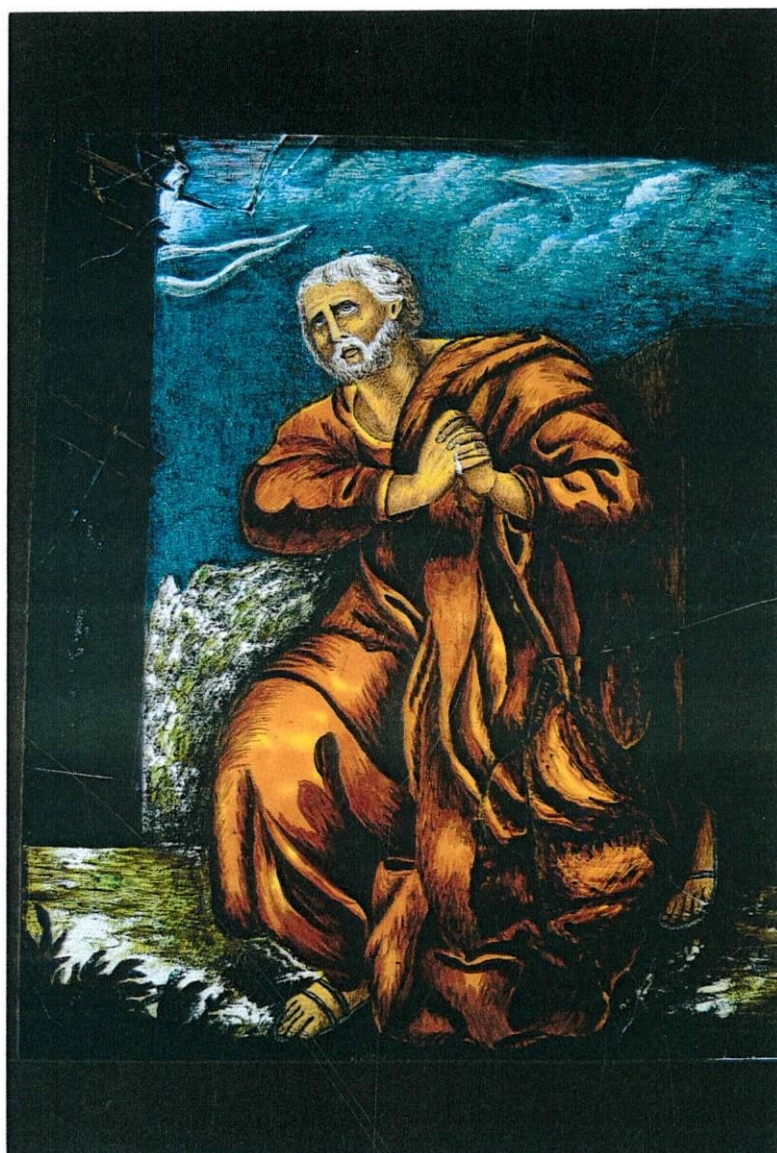
Cracks from vandalism.....[SJ



South aisle stained glass pane. St Michael and All Angels Church, Averham, Notts.  
Before removal and conservation.



South aisle stained glass pane. St Michael and All Angels Church, Averham, Notts.  
After conservation .



South aisle stained glass pane. St Michael and All Angels Church , Averham, Notts.  
After conservation and reinstallation.

